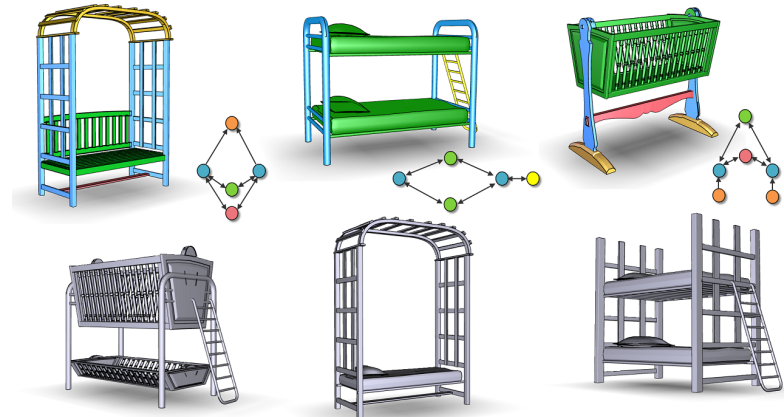


Smart Variations

Functional Substructures for Part Compatibility



Youyi Zheng



Daniel Cohen-Or



Niloy J. Mitra



How to Create 3D Models?



How to Create 3D Models?

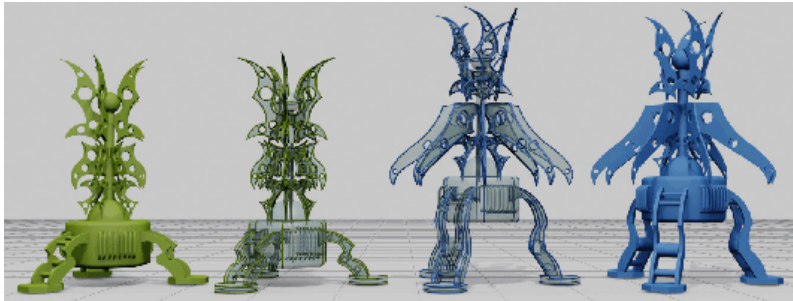


easy access to 3D models

Creating Shape Variations

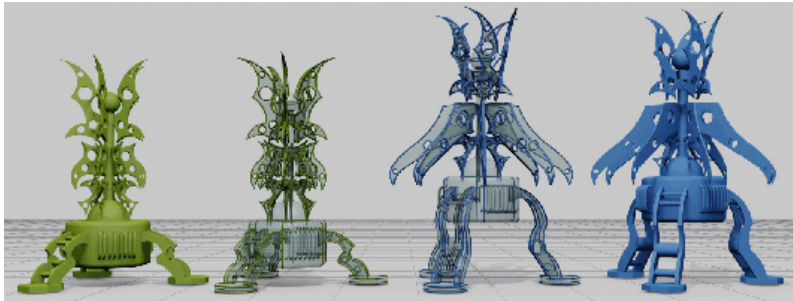


Creating Shape Variations

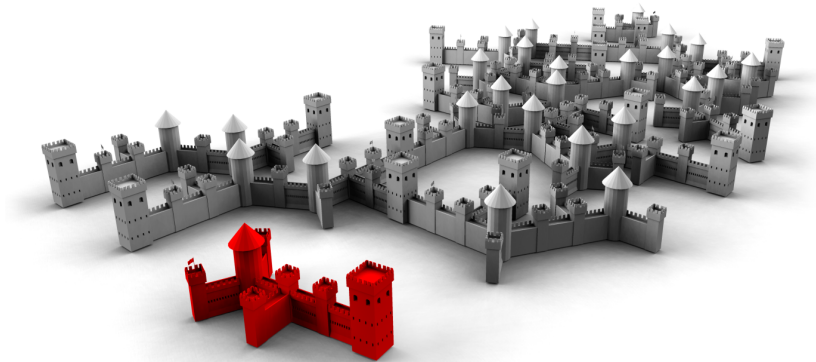


[Gal et al. 2009]

Creating Shape Variations

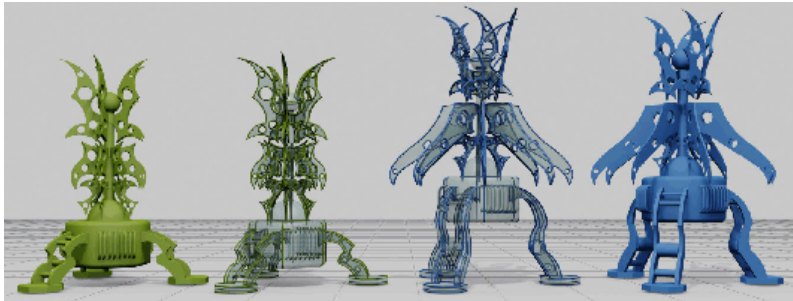


[Gal et al. 2009]

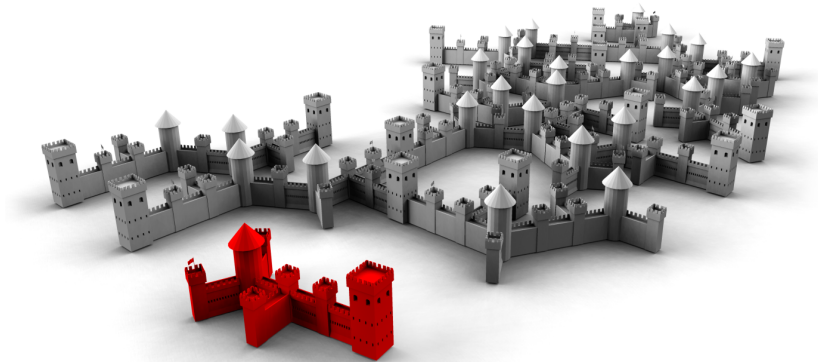


[Bokeloh et al. 2010,2011]

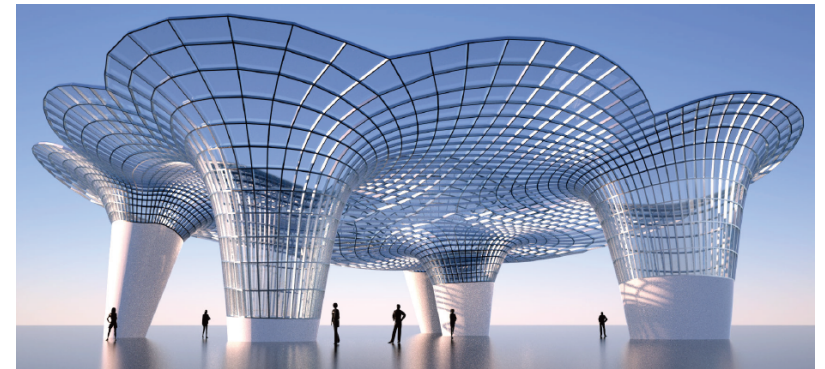
Creating Shape Variations



[Gal et al. 2009]

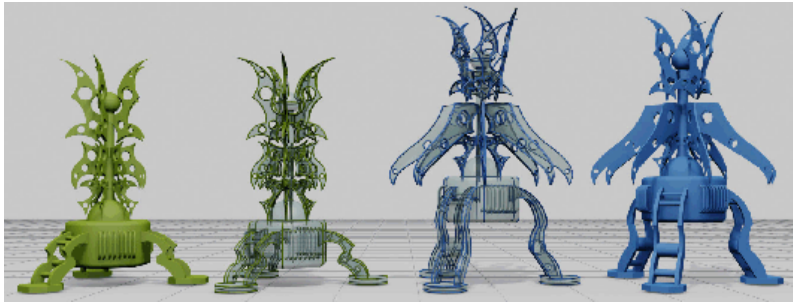


[Bokeloh et al. 2010,2011]



[Yang et al. 2011]

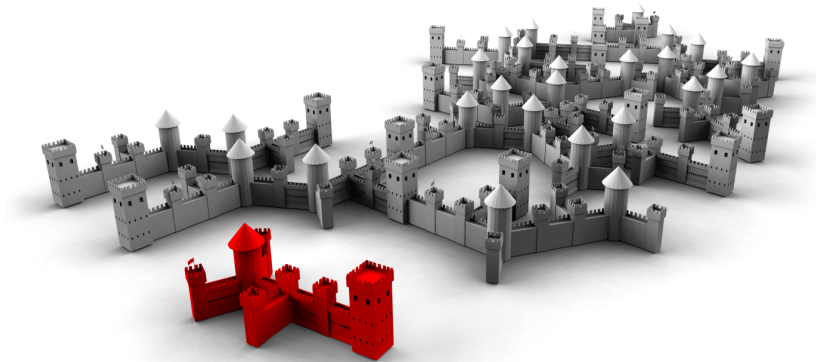
Creating Shape Variations



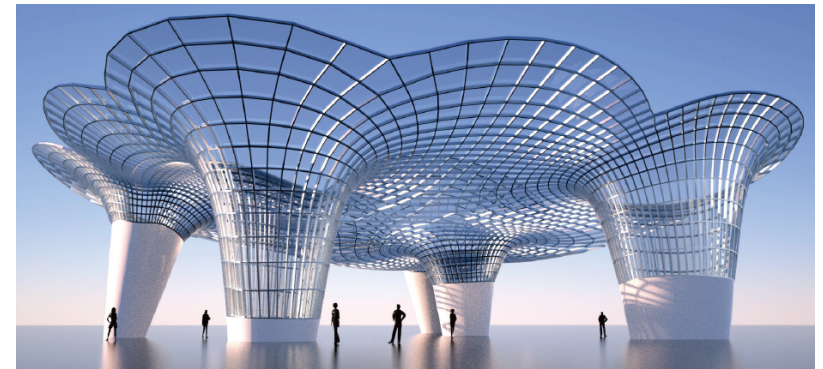
[Gal et al. 2009]



[Jain et al. 2012]



[Bokeloh et al. 2010,2011]



[Yang et al. 2011]

Compositional Modeling



Compositional Modeling



[Funkhouser et al. 2004]

Learning Shape Variations



Learning Shape Variations

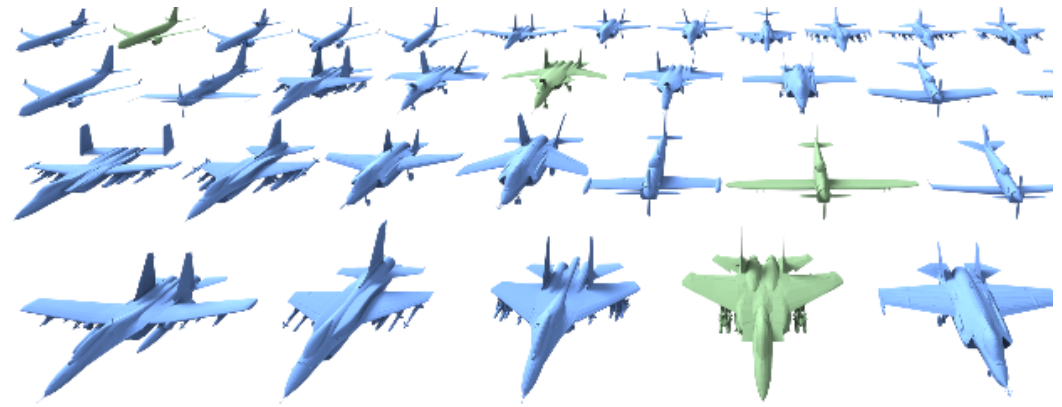


[Xu et al. 2012]

Learning Shape Variations

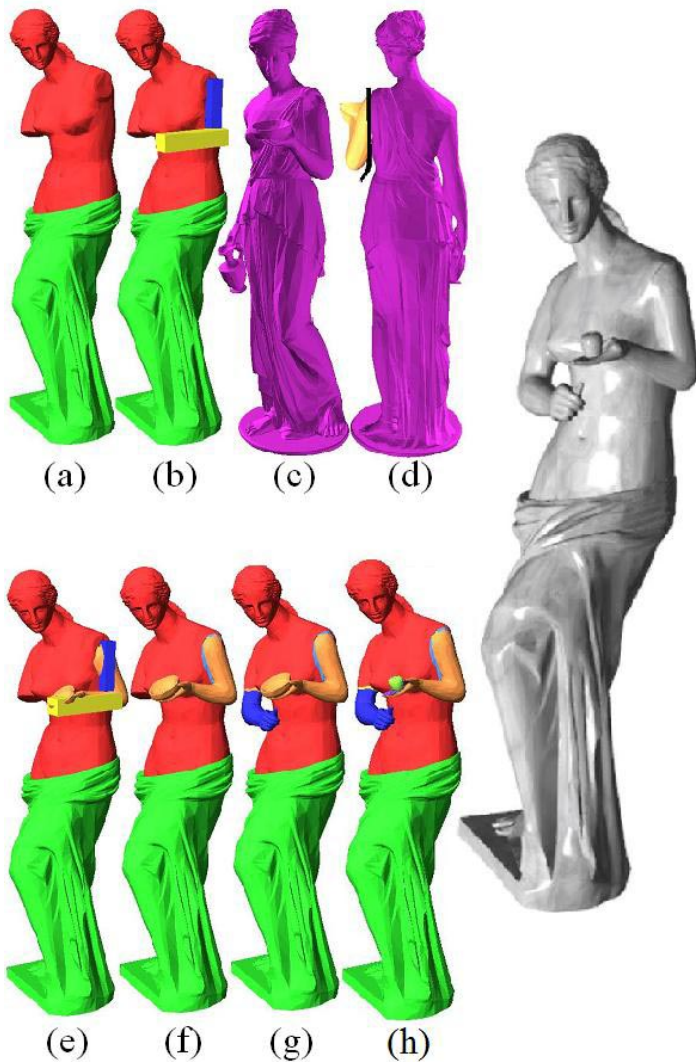


[Xu et al. 2012]



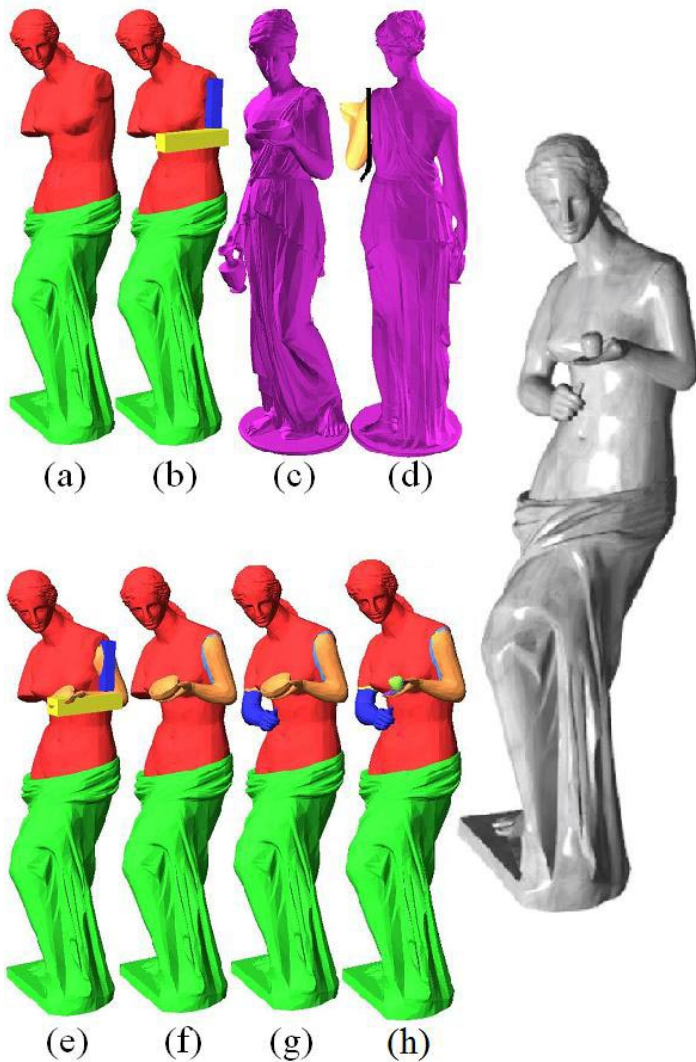
[Kalogerakis et al. 2012]

Compositional Modeling



[Funkhouser et al. 2004]

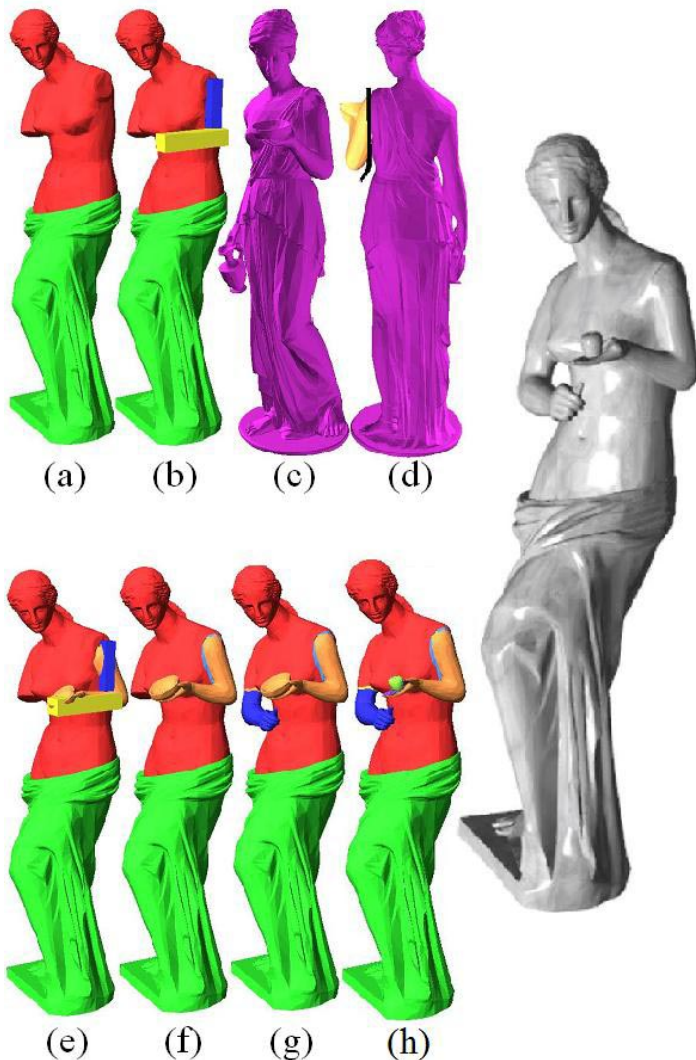
Compositional Modeling



1. Which part(s) to replace?

[Funkhouser et al. 2004]

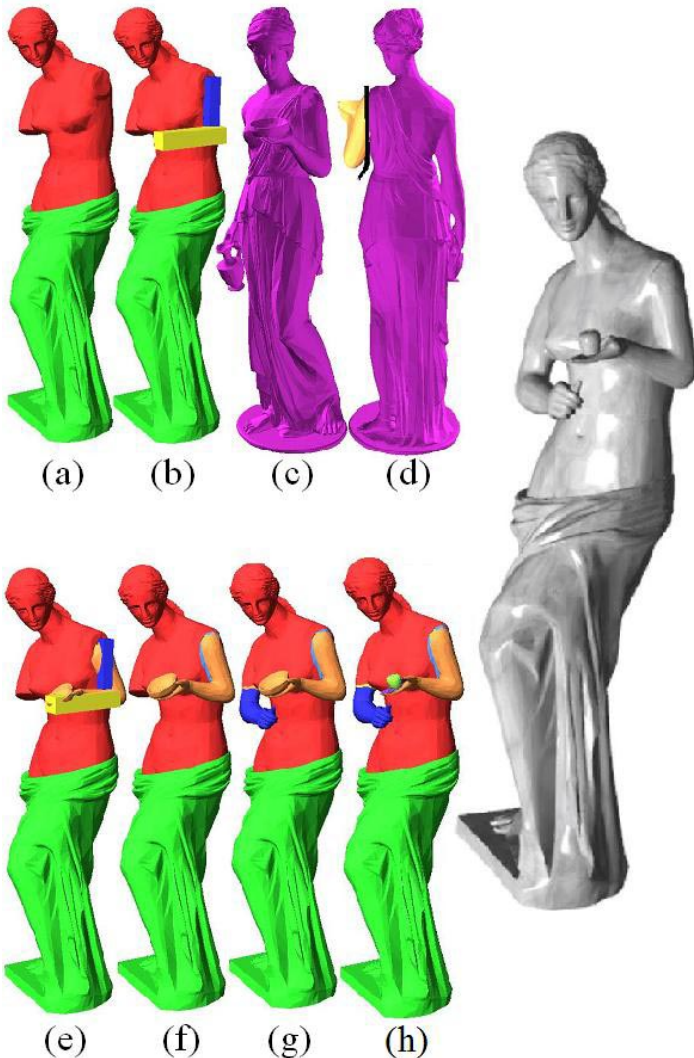
Compositional Modeling



1. Which part(s) to replace?
2. What to replace with?

[Funkhouser et al. 2004]

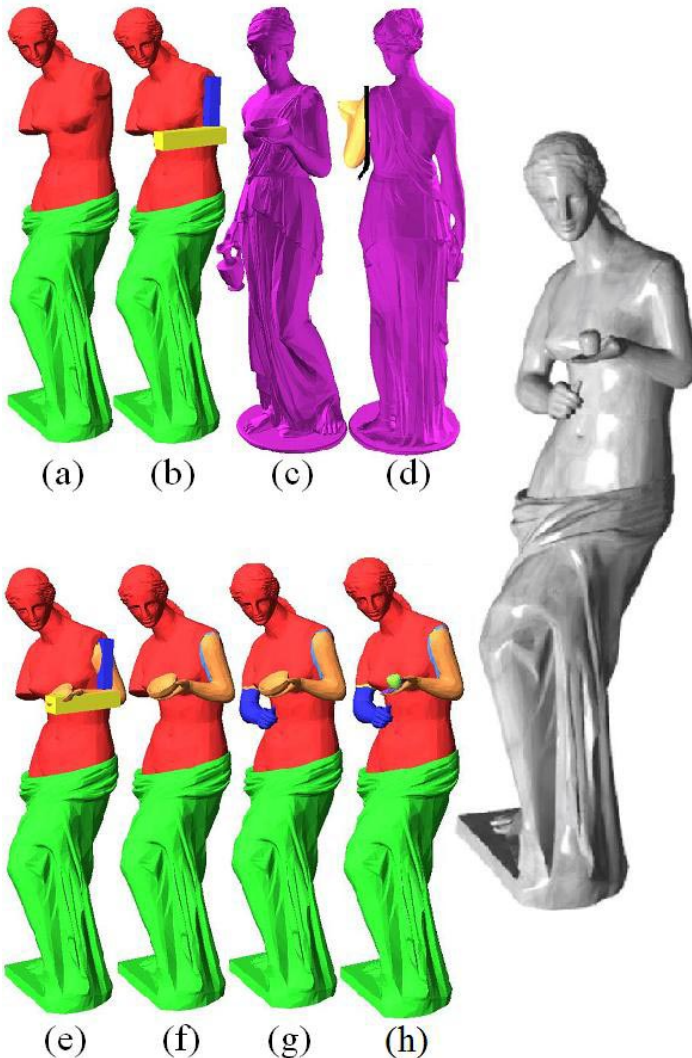
Compositional Modeling



1. Which part(s) to replace?
2. What to replace with?
3. How to connect the parts?

[Funkhouser et al. 2004]

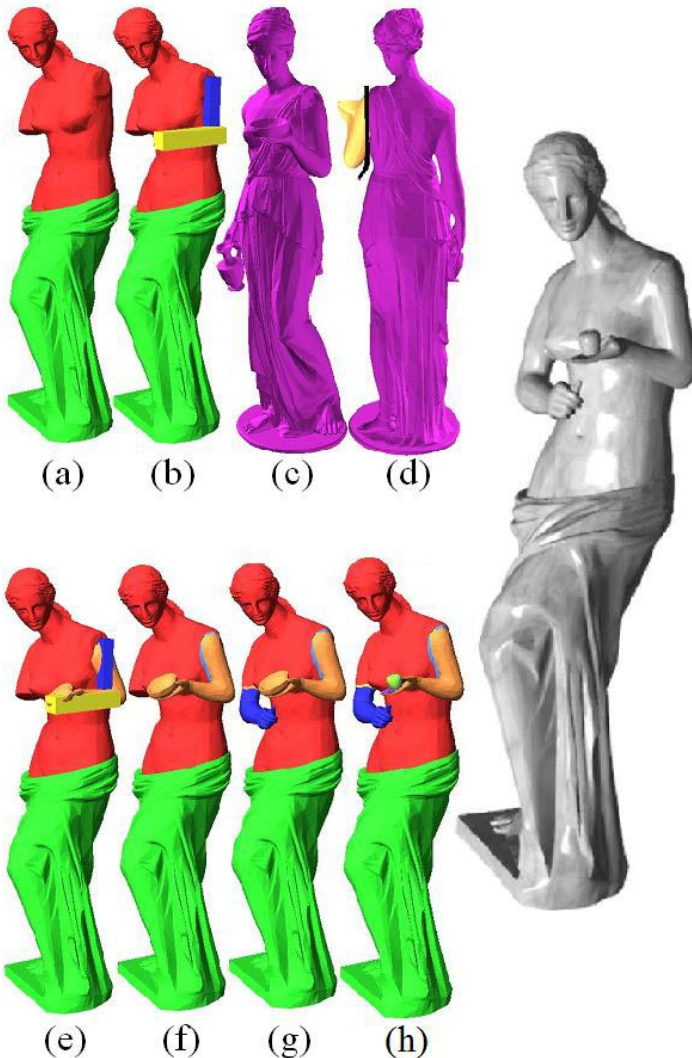
Compositional Modeling



1. Which part(s) to replace?
2. What to replace with?
3. How to connect the parts?

geometric similarity

[Funkhouser et al. 2004]



[Funkhouser et al. 2004]

1. Which part(s) to replace?
2. What to replace with?
3. How to connect the parts?

geometric similarity

restricted to the same object class

Beyond Geometric Similarity

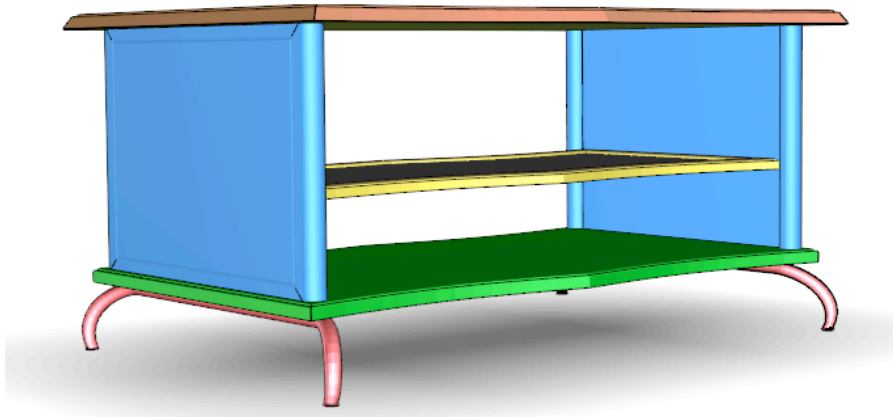


What are the parts and ***how*** are they connected?

Beyond Geometric Similarity



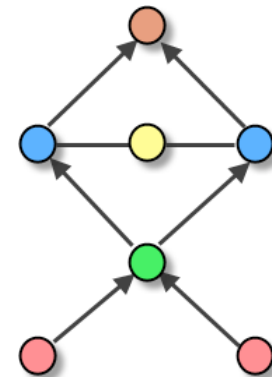
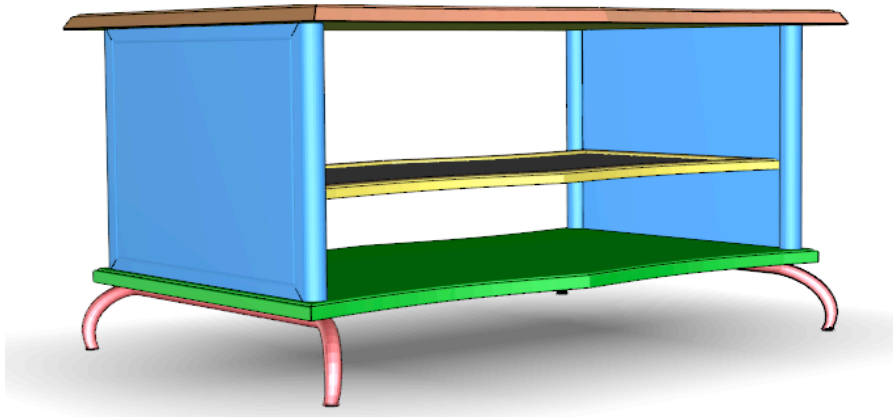
What are the parts and ***how*** are they connected?



Beyond Geometric Similarity



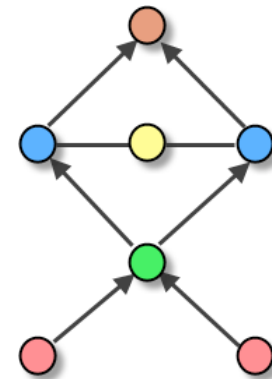
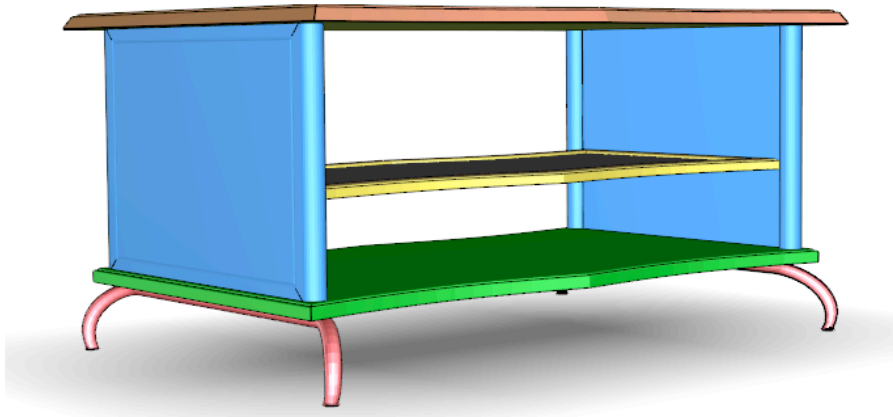
What are the parts and ***how*** are they connected?



Beyond Geometric Similarity

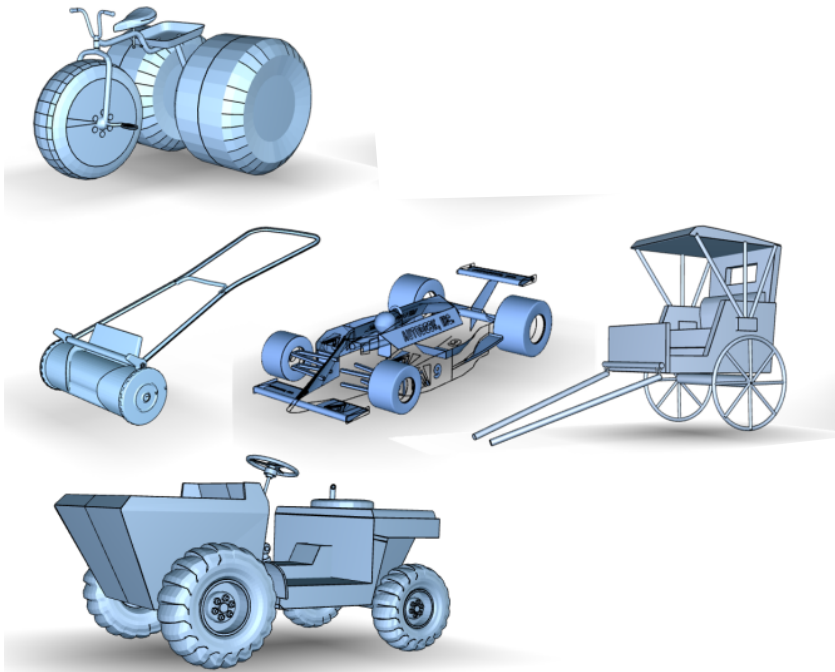


What are the parts and ***how*** are they connected?

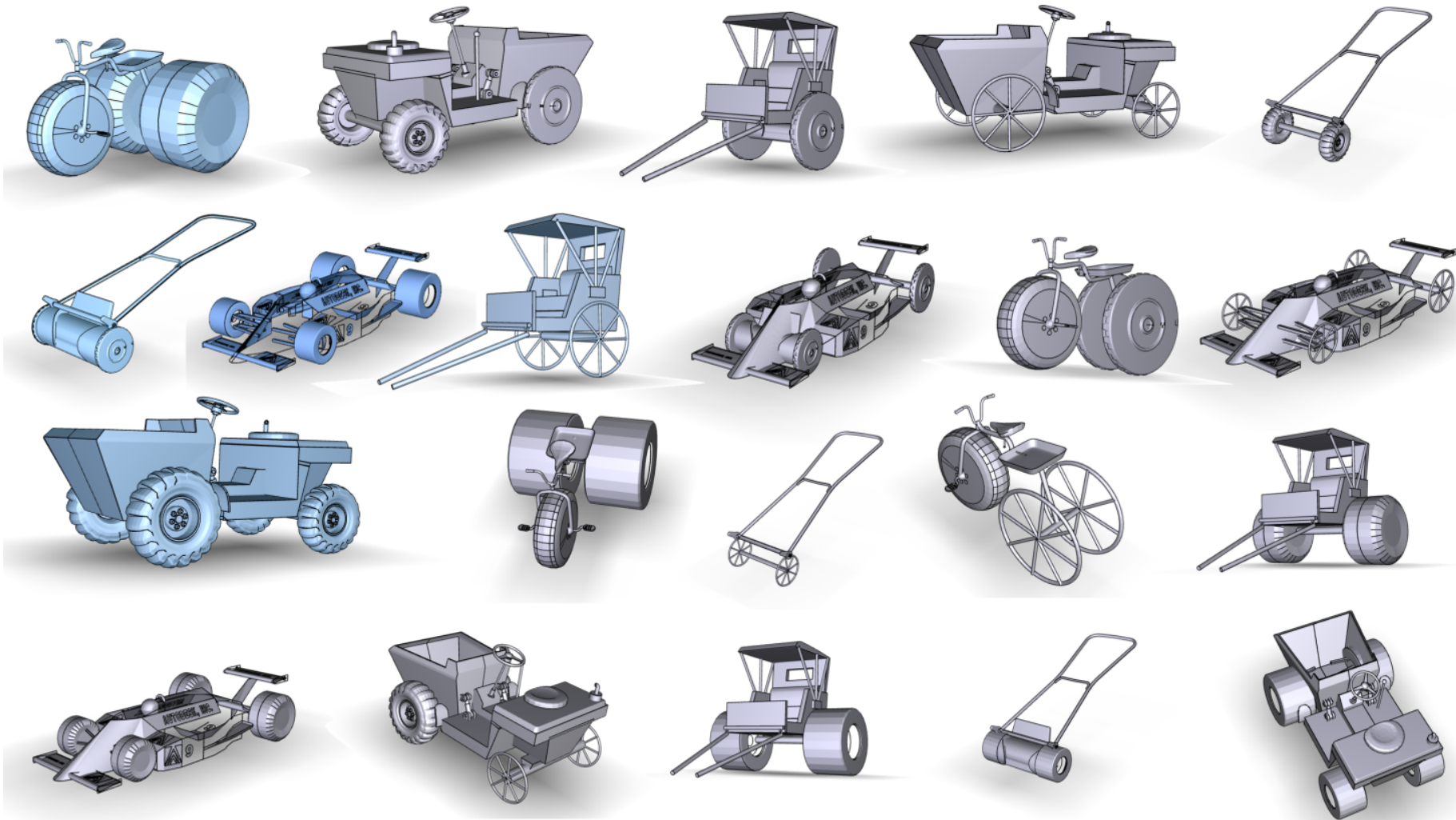


part-level 3D model \longrightarrow directed graph

Our Approach



Our Approach



Hypothesis

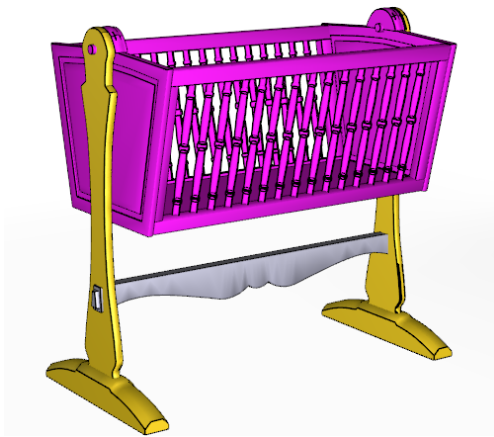
Hypothesis

- Similar *substructures* share similar *functionality*



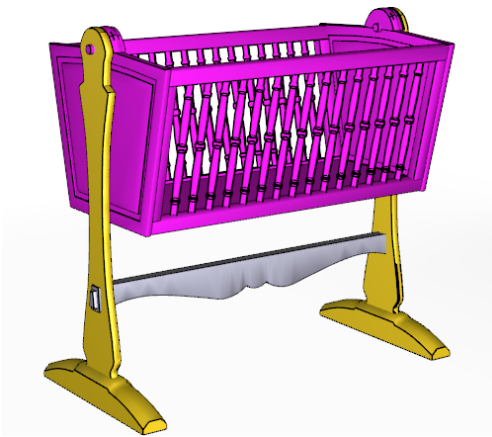
Hypothesis

- Similar *substructures* share similar *functionality*
- Mutual relations reveals shape structure



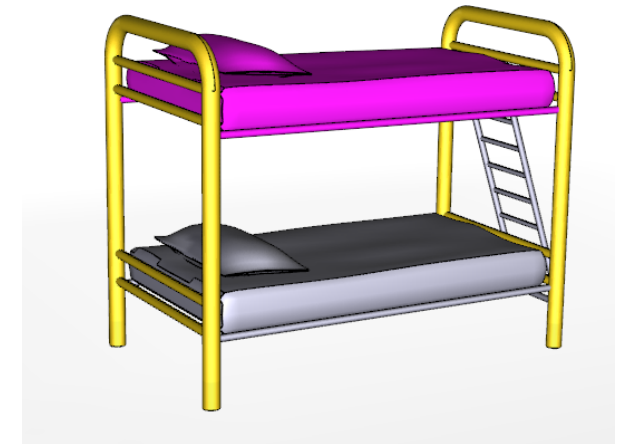
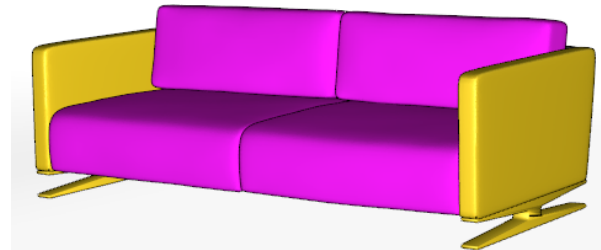
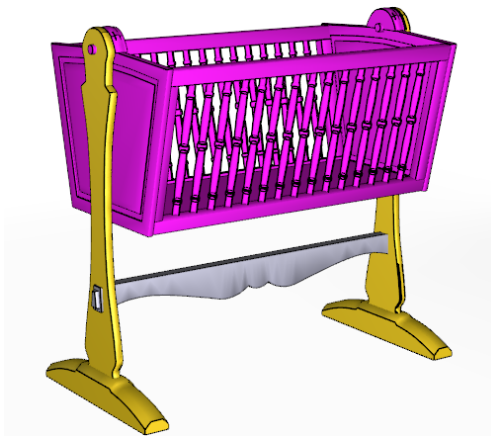
Hypothesis

- Similar *substructures* share similar *functionality*
- Mutual relations reveals shape structure
 - Certain arrangements are more common than others



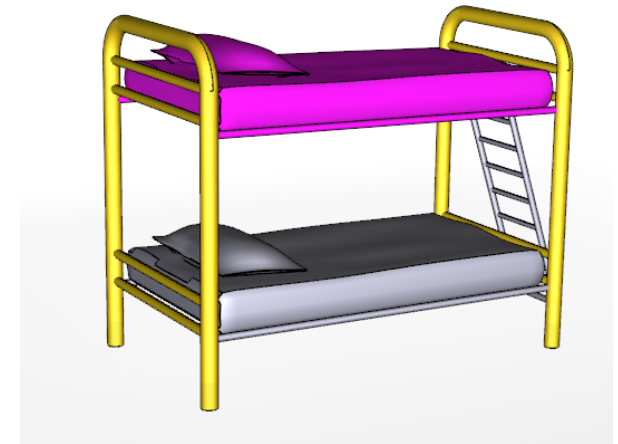
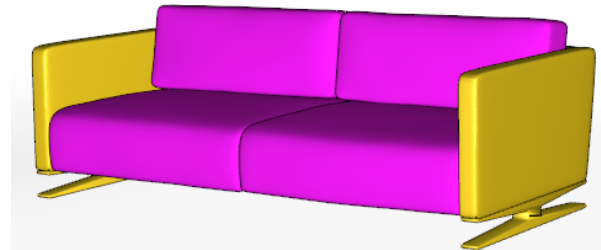
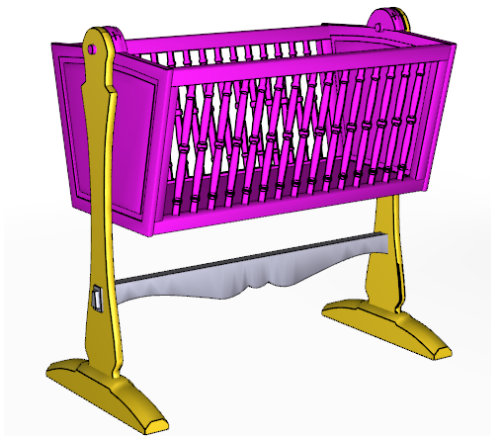
Hypothesis

- Similar *substructures* share similar *functionality*
- Mutual relations reveals shape structure
 - Certain arrangements are more common than others



Hypothesis

- Similar *substructures* share similar *functionality*
- Mutual relations reveals shape structure
 - Certain arrangements are more common than others



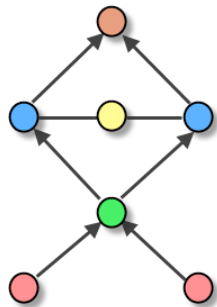
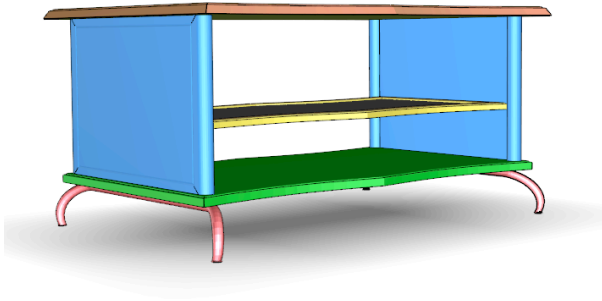
arrangement → triplet of parts

Algorithm: Structure Analysis

Algorithm: Structure Analysis

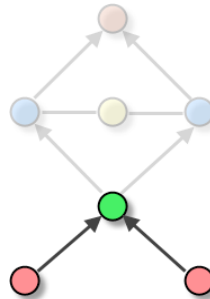
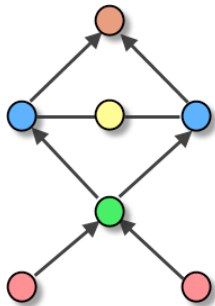
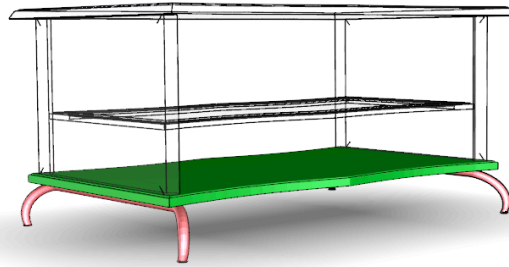
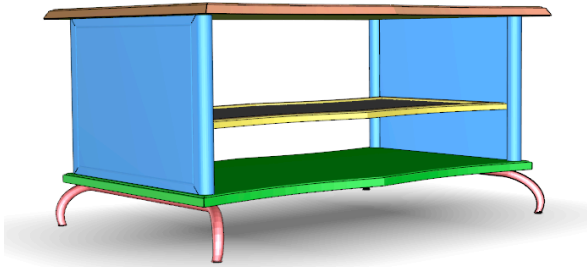
symmetry analysis + contact analysis

Algorithm: Structure Analysis



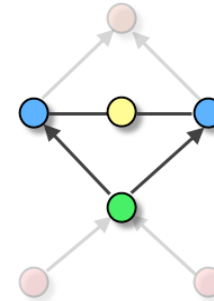
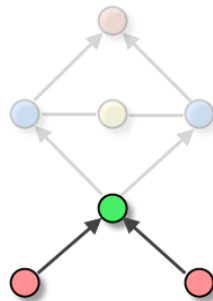
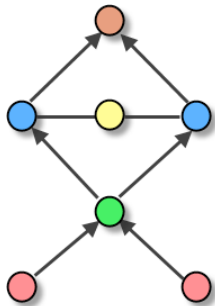
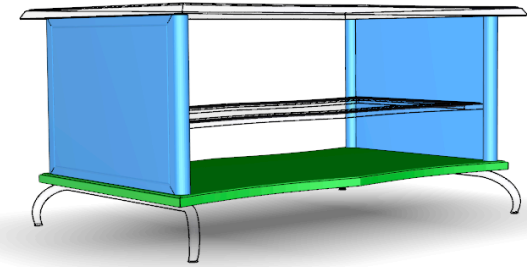
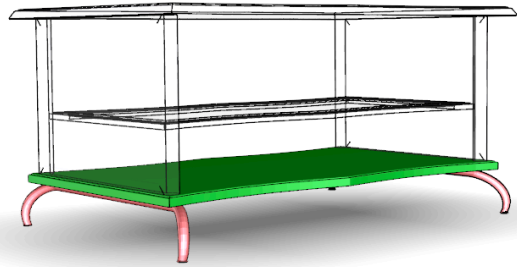
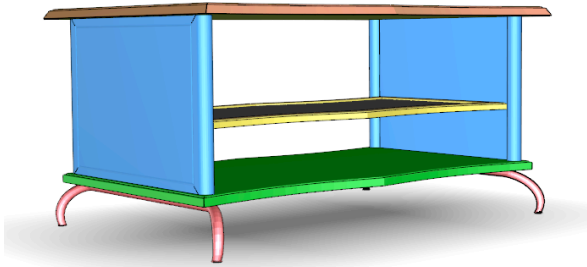
symmetry analysis + contact analysis

Algorithm: Structure Analysis



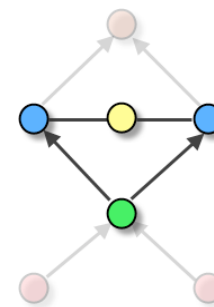
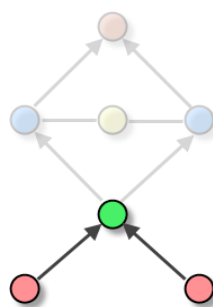
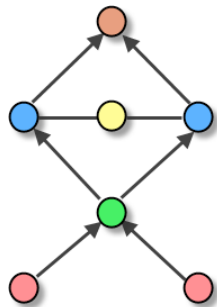
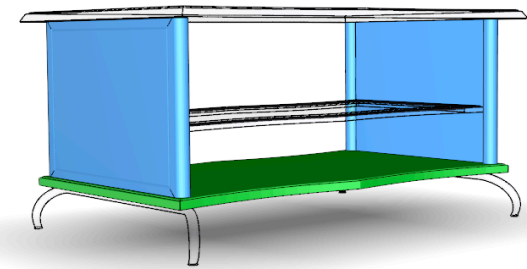
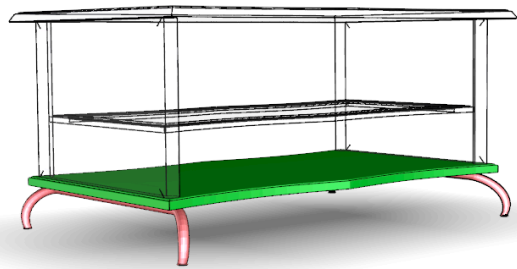
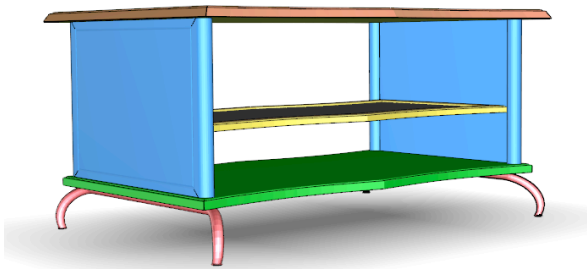
symmetry analysis + contact analysis

Algorithm: Structure Analysis



symmetry analysis + contact analysis

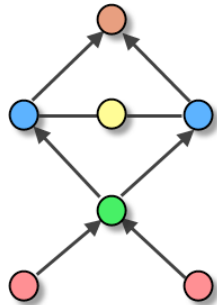
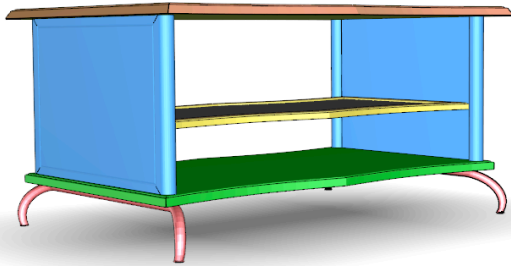
Algorithm: Structure Analysis



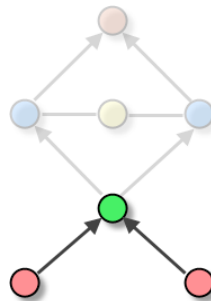
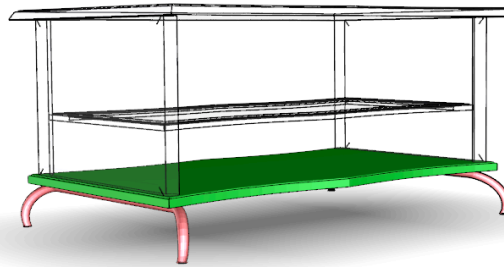
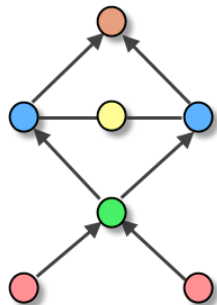
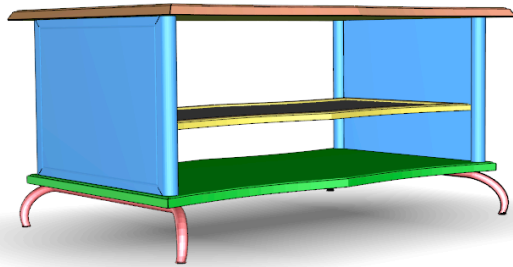
...

symmetry analysis + contact analysis

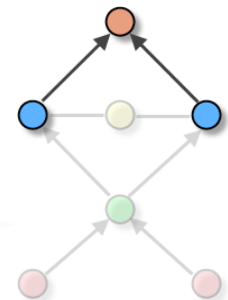
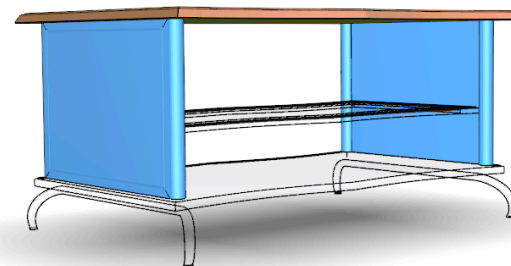
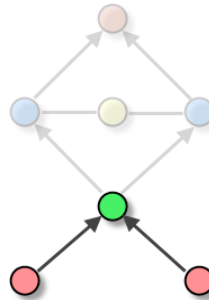
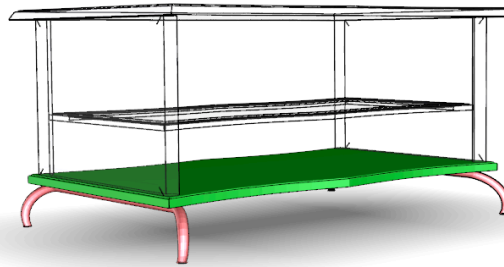
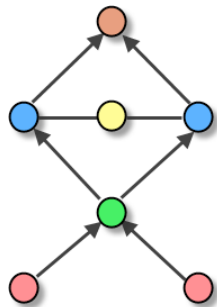
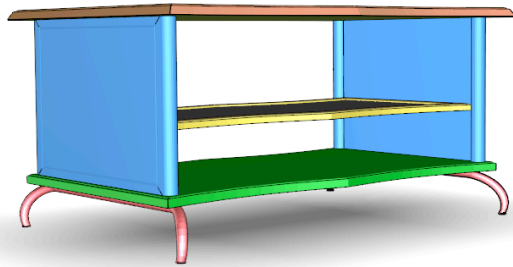
Functional Substructures (sFarr)



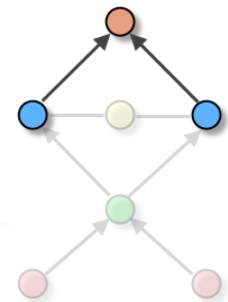
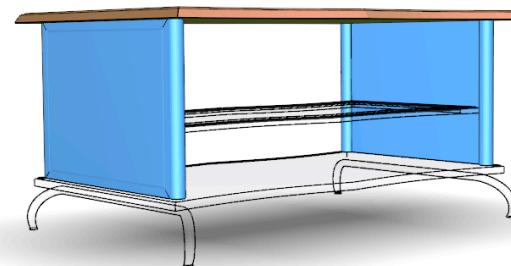
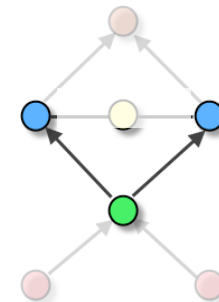
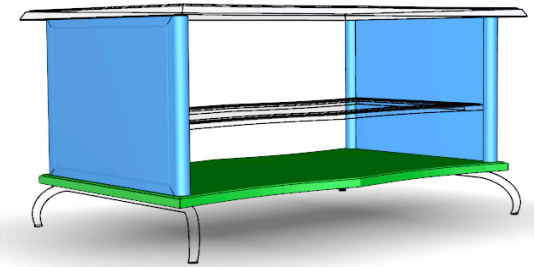
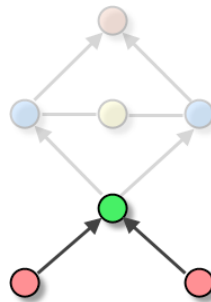
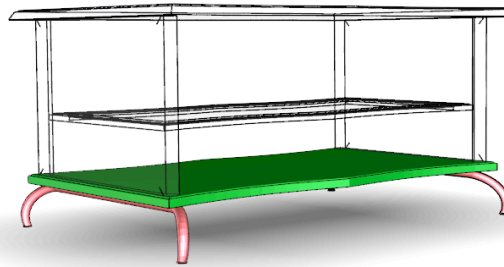
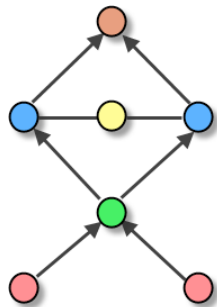
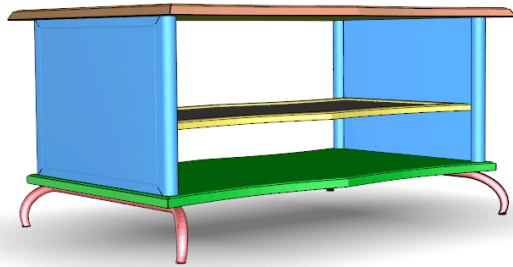
Functional Substructures (sFarr)



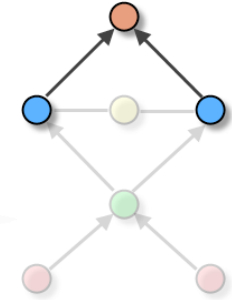
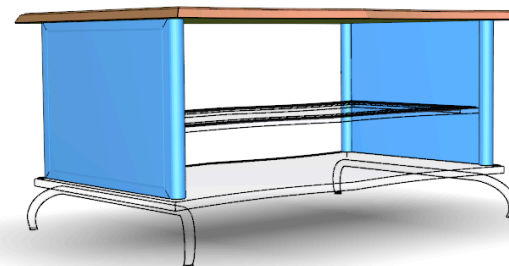
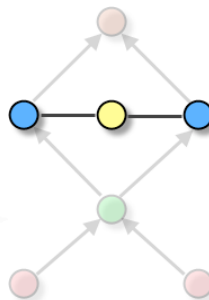
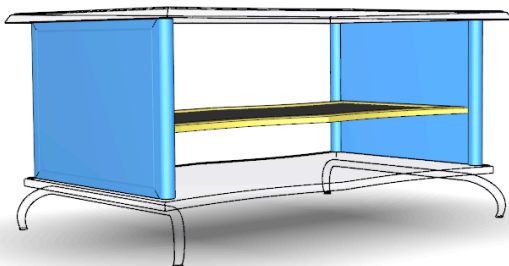
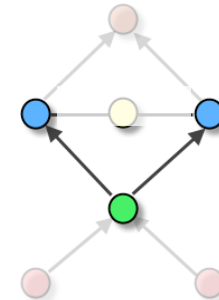
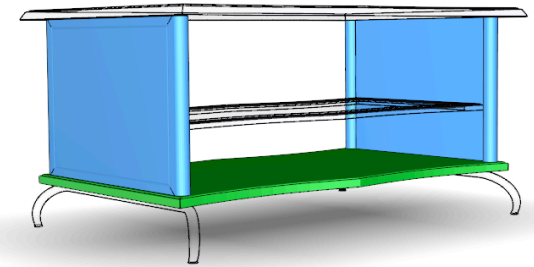
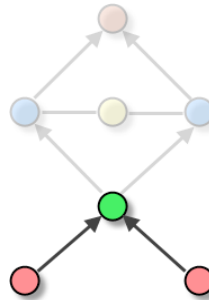
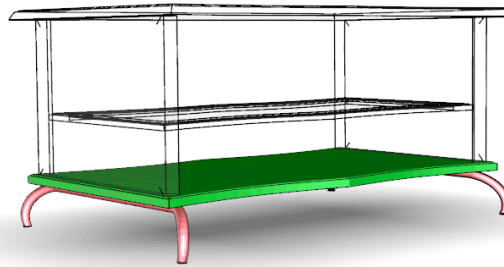
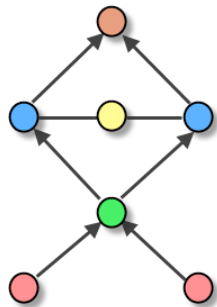
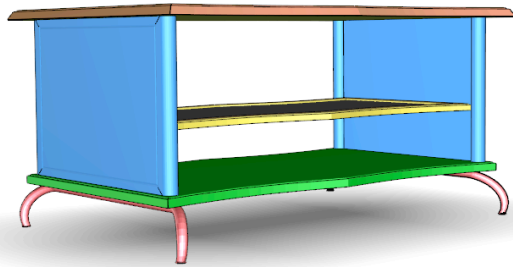
Functional Substructures (sFarr)



Functional Substructures (sFarr)

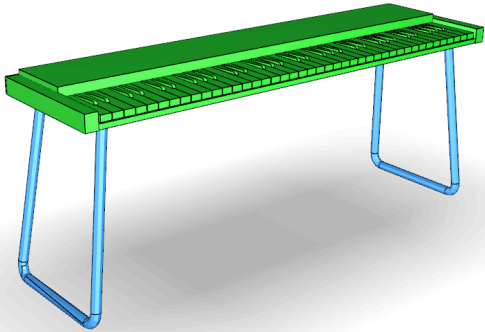


Functional Substructures (sFarr)

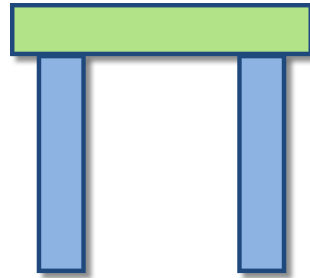


Types of sFarrs

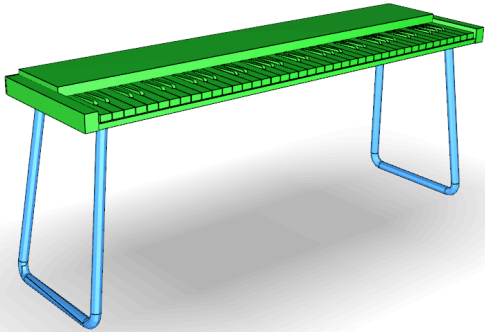
Types of sFarrs



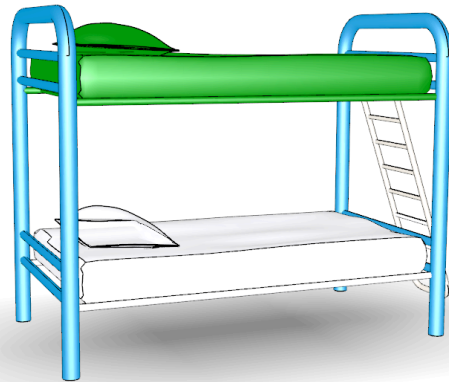
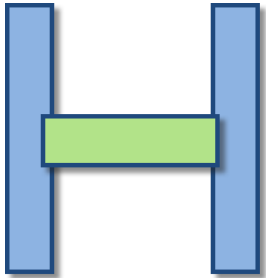
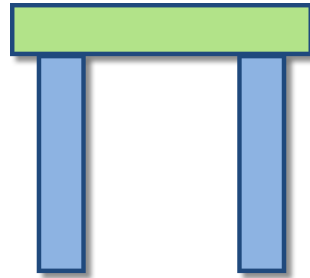
support



Types of sFarrs

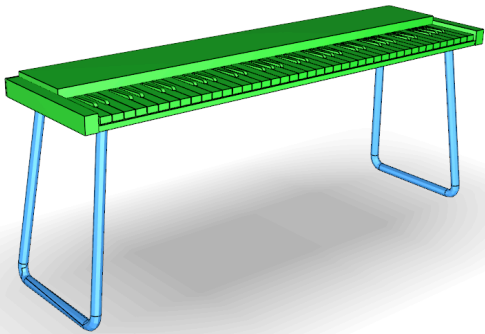


support

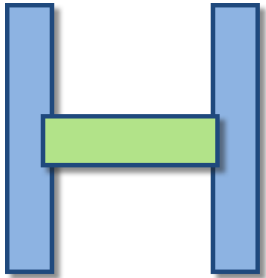
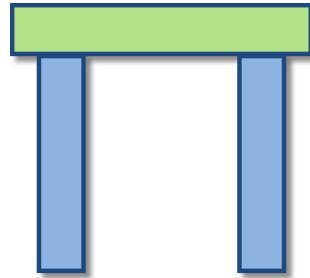


embed

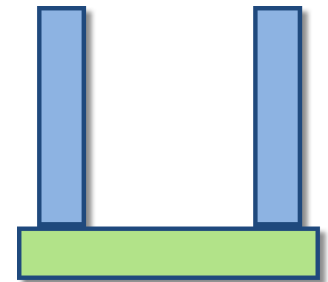
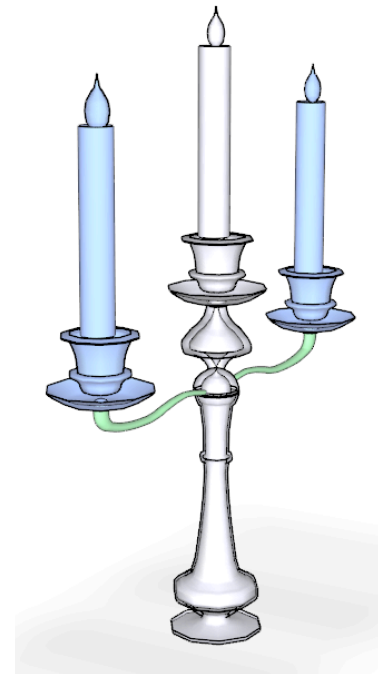
Types of sFarrs



support



embed

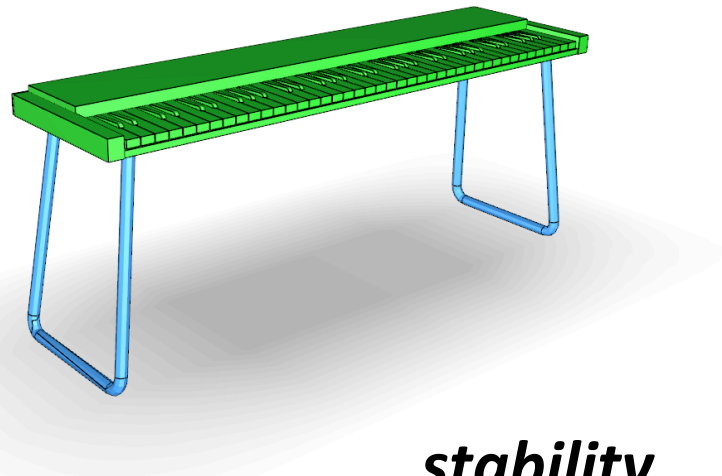


placement

Substructure Attributes

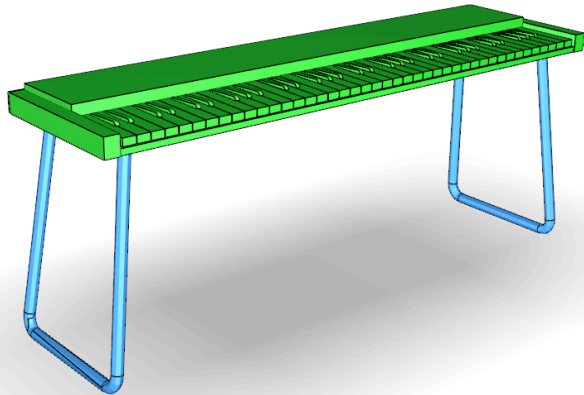


Substructure Attributes

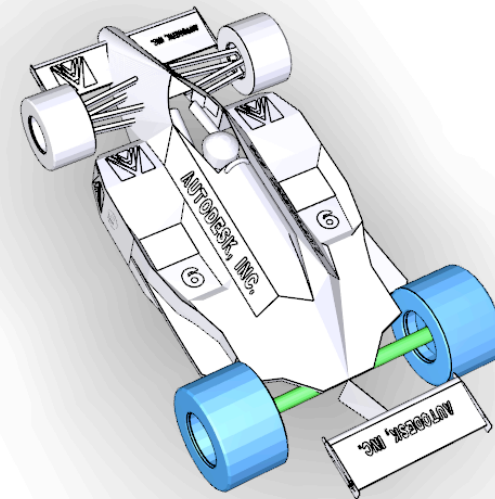


stability

Substructure Attributes



stability



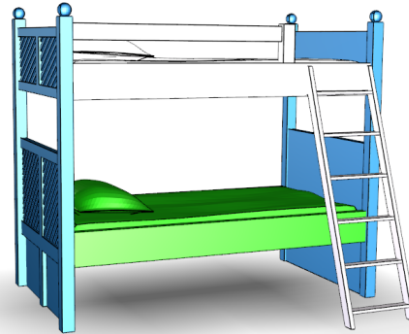
co-axial

Compatible sFarrs

Compatible sFarrs



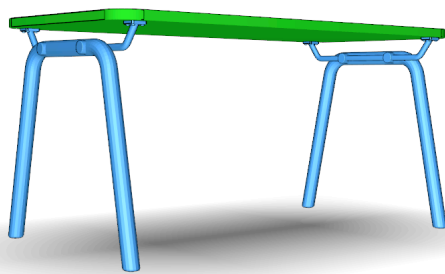
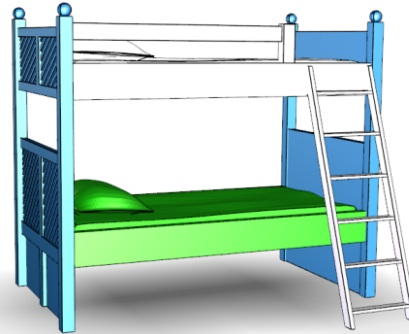
Compatible *embed* sFARRs



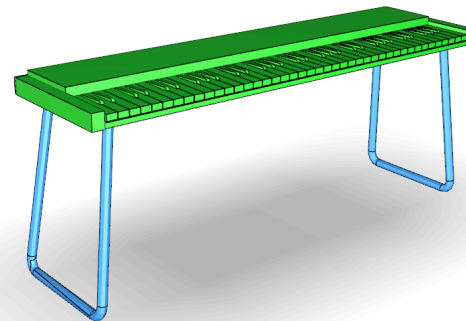
Compatible sFarrs



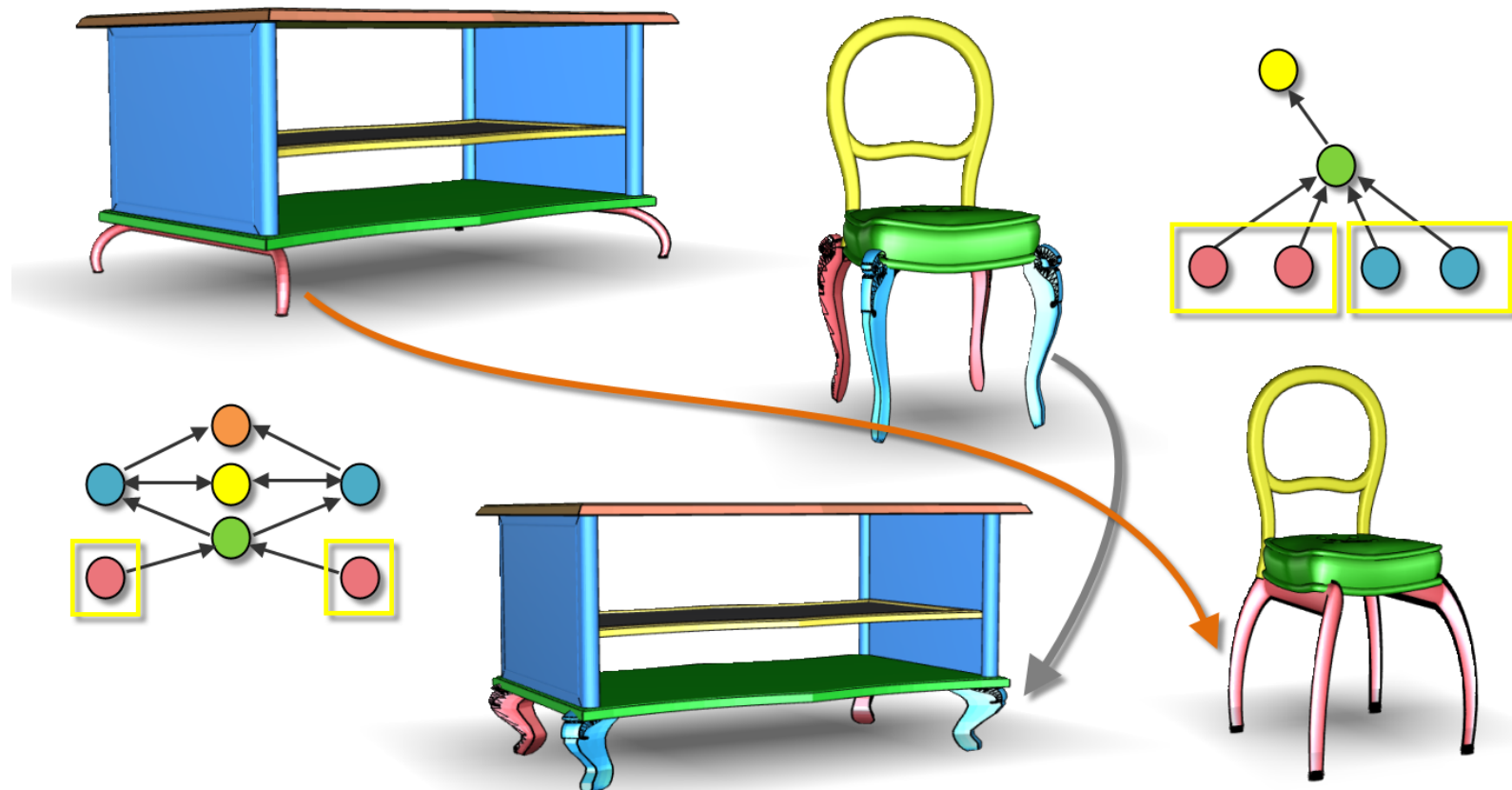
Compatible **embed** sFarrs



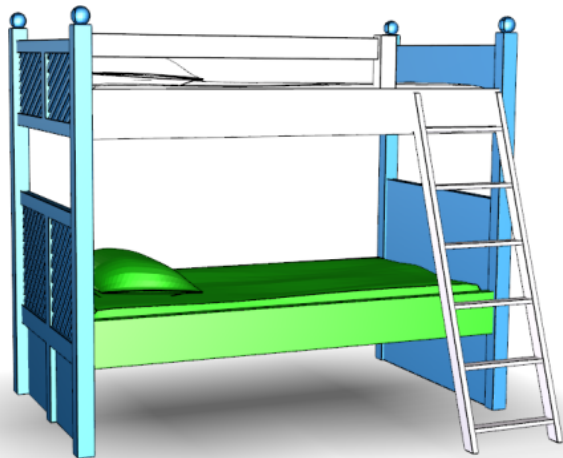
Compatible **support** sFarrs



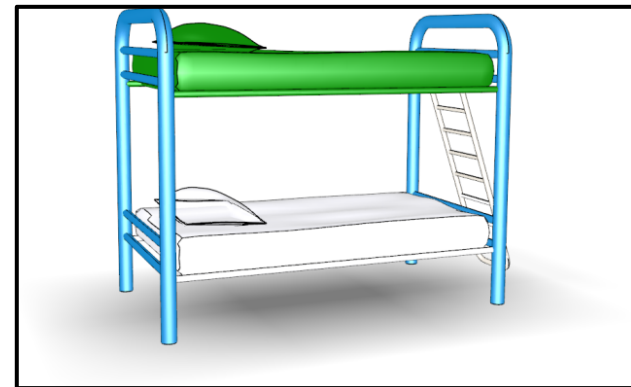
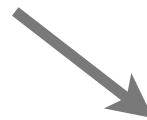
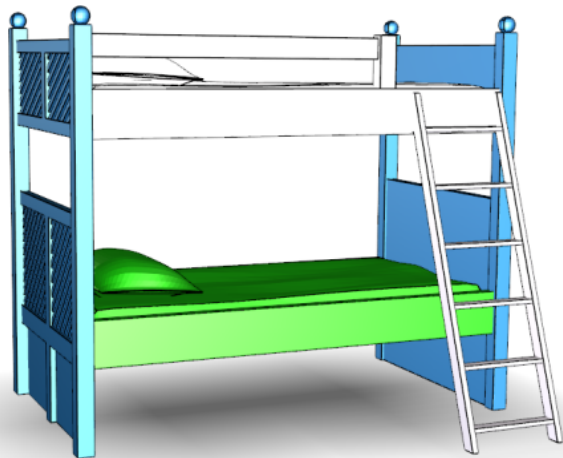
Group sFarr



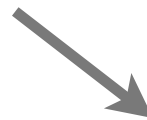
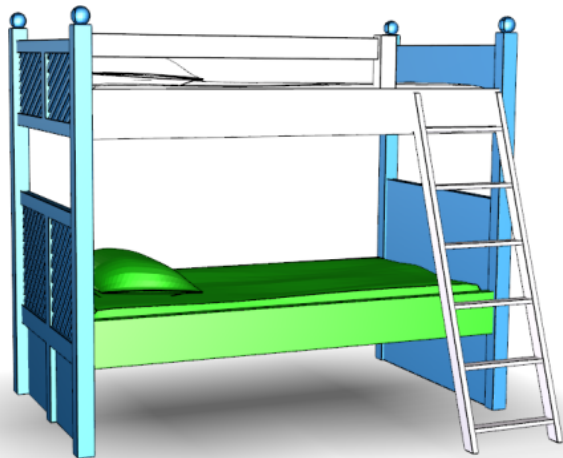
sFarr Reshuffle



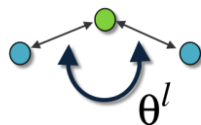
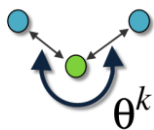
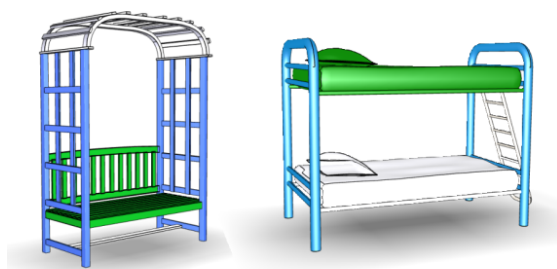
sFarr Reshuffle



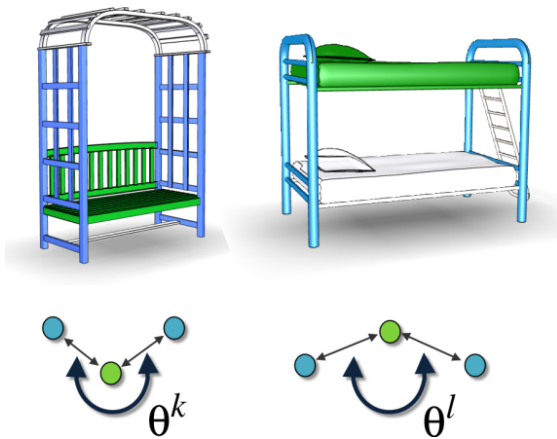
sFarr Reshuffle



sFarr Compatibility

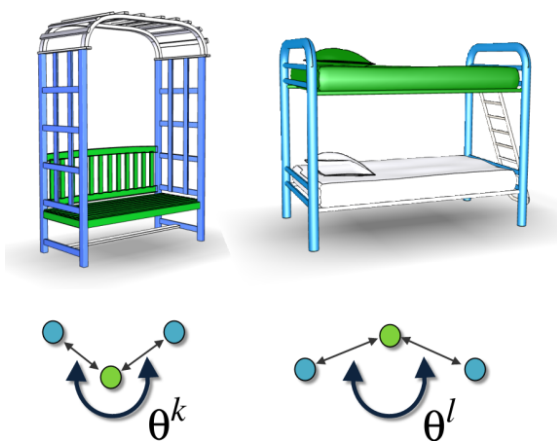


sFarr Compatibility



$$\Upsilon(t_k, t_l) = \lambda \cdot \theta \cdot \vartheta$$

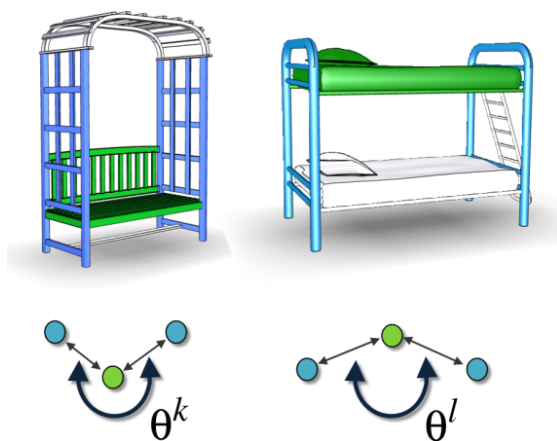
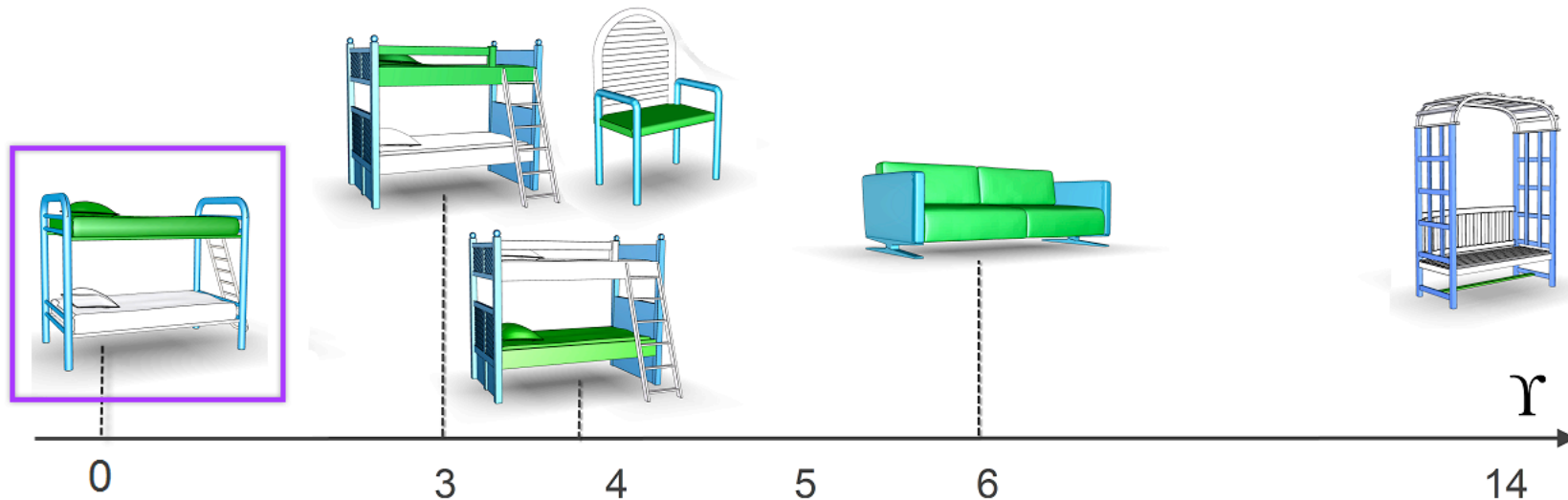
sFarr Compatibility



$$\Upsilon(t_k, t_l) = \lambda \cdot \theta \cdot \vartheta$$

scale angle distortion

sFarr Compatibility



$$\Upsilon(t_k, t_l) = \lambda \cdot \theta \cdot \vartheta$$

scale angle distortion

How to Place the Parts?

How to Place the Parts?

- Set of parts, say, $\{P_1, P_2, \dots\}$

How to Place the Parts?

- Set of parts, say, $\{P_1, P_2, \dots\}$
- Each part encoded by parameters: \mathbf{x}_i

How to Place the Parts?

- Set of parts, say, $\{P_1, P_2, \dots\}$
- Each part encoded by parameters: \mathbf{x}_i
- Contact constraint: $c_{ij}(\mathbf{x}_i) = c_{ij}(\mathbf{x}_j)$

How to Place the Parts?

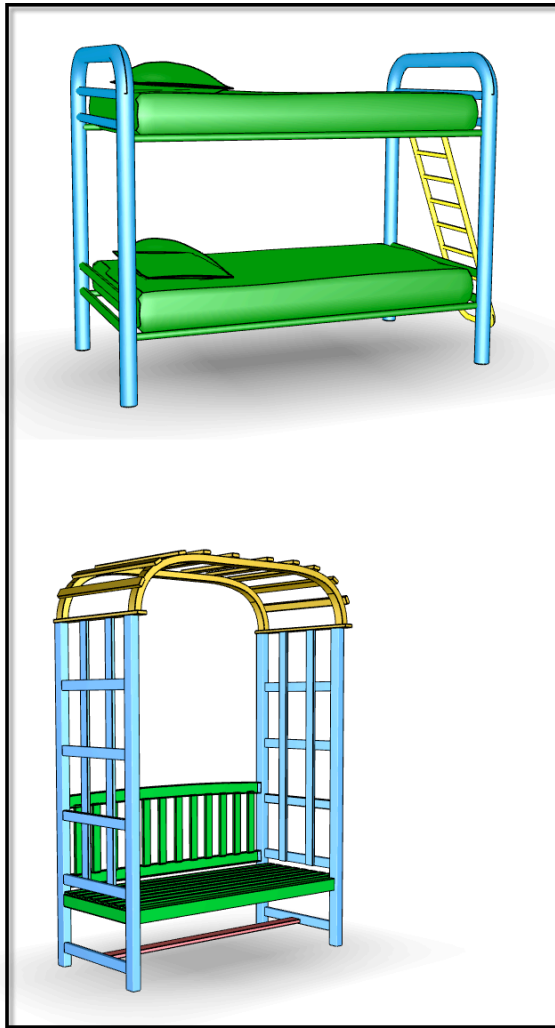
- Set of parts, say, $\{P_1, P_2, \dots\}$
- Each part encoded by parameters: \mathbf{x}_i
- Contact constraint: $c_{ij}(\mathbf{x}_i) = c_{ij}(\mathbf{x}_j)$
- Symmetry constraint: $P_i = T(P_j)$

How to Place the Parts?

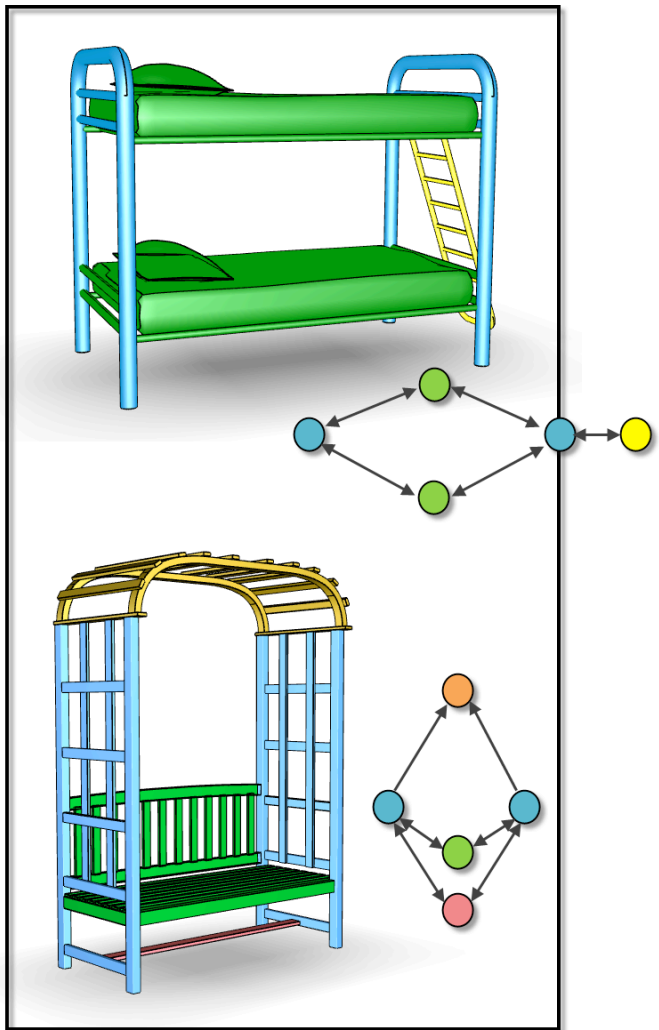
- Set of parts, say, $\{P_1, P_2, \dots\}$
- Each part encoded by parameters: \mathbf{x}_i
- Contact constraint: $c_{ij}(\mathbf{x}_i) = c_{ij}(\mathbf{x}_j)$
- Symmetry constraint: $P_i = T(P_j)$

$$\min_{\mathbf{X}} E(\{\mathbf{x}_1, \mathbf{x}_2, \dots\}) \text{ s.t. } g_j(\mathbf{X}) = 0$$

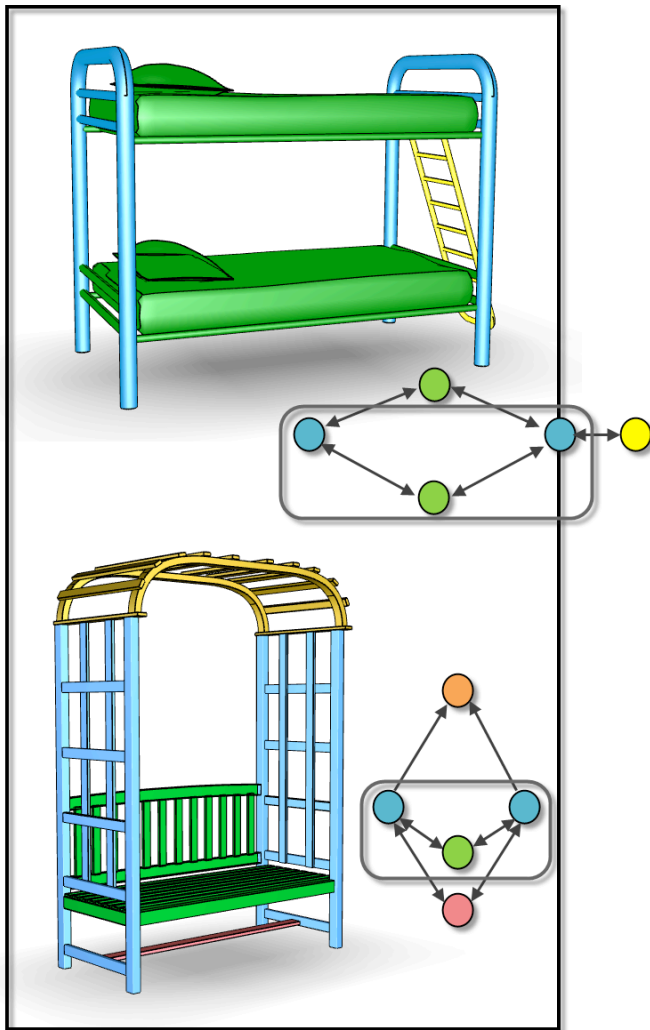
Placement Optimization



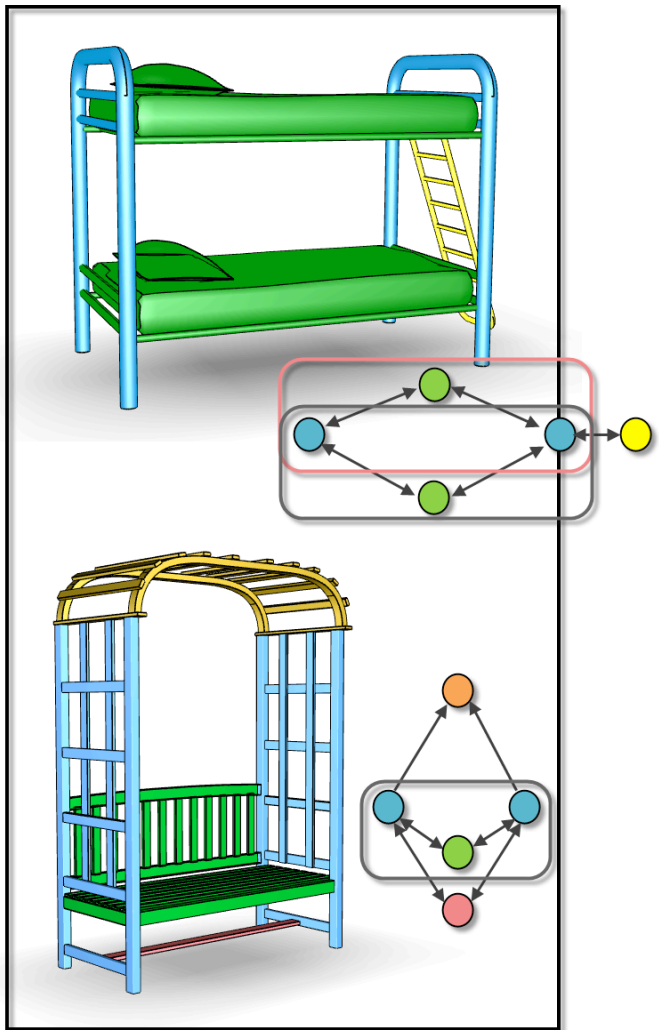
Placement Optimization



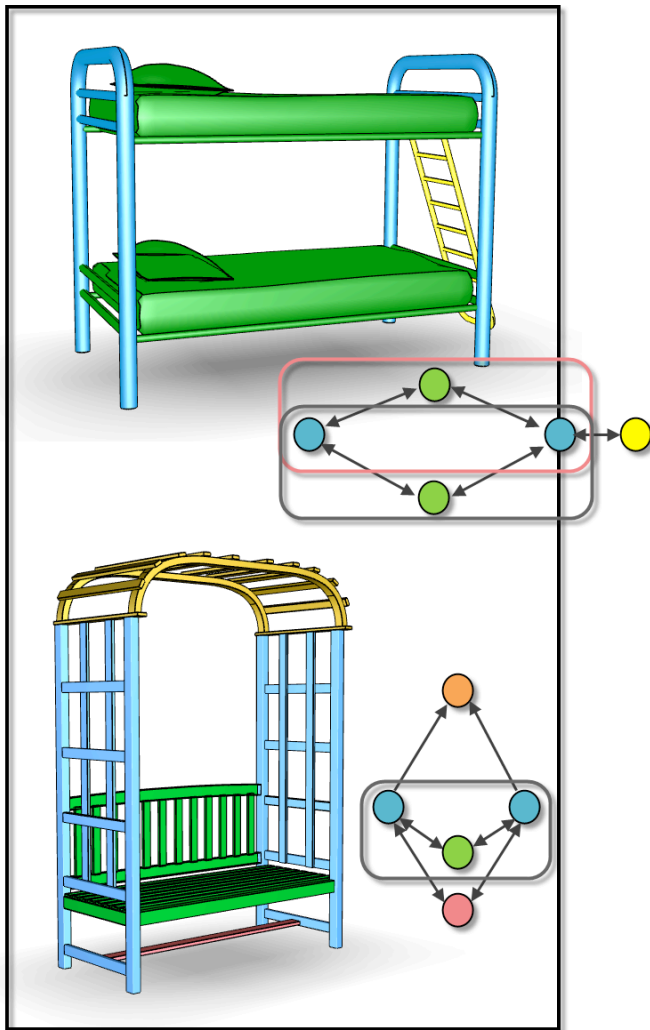
Placement Optimization



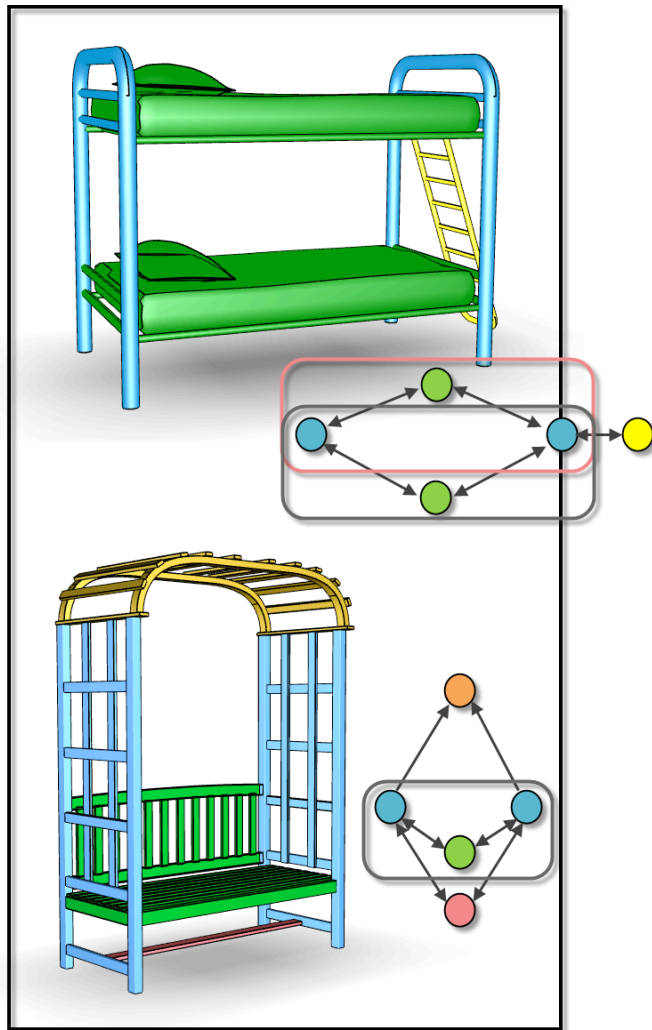
Placement Optimization



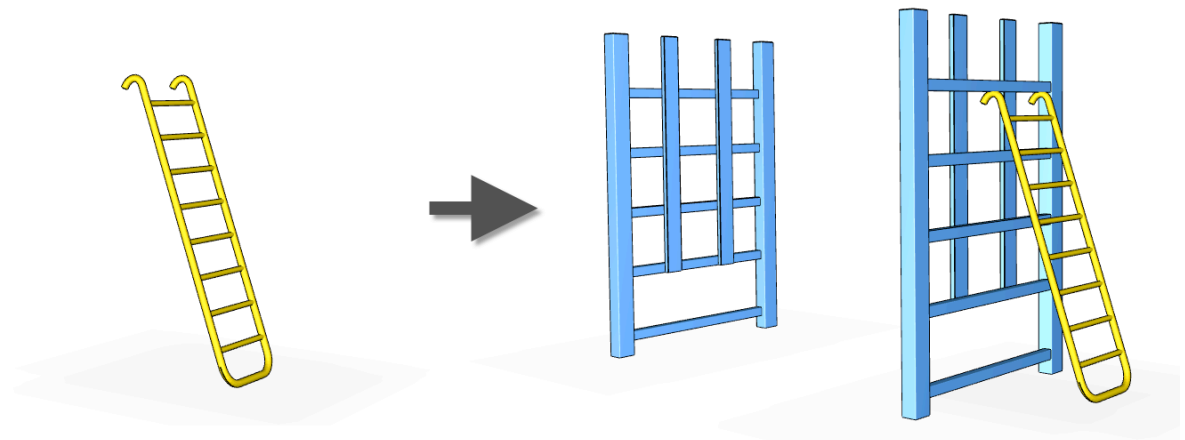
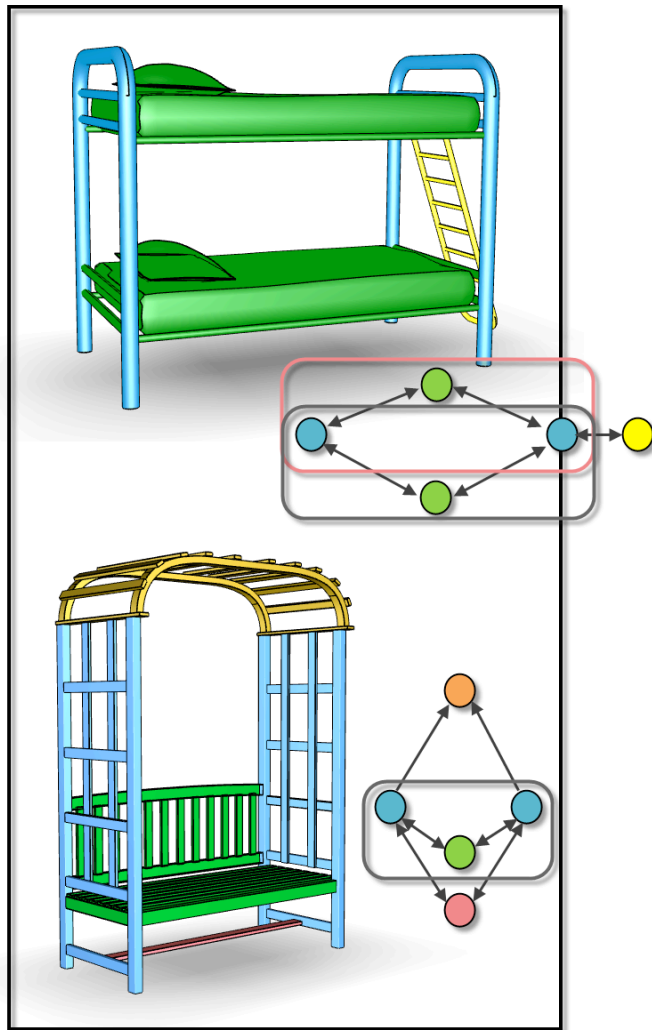
Placement Optimization



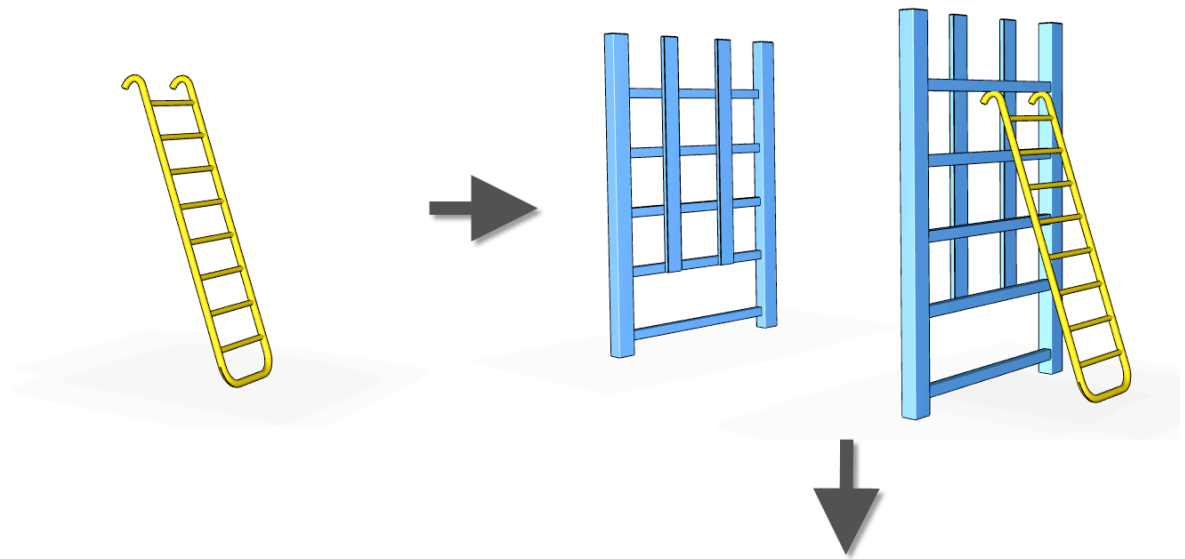
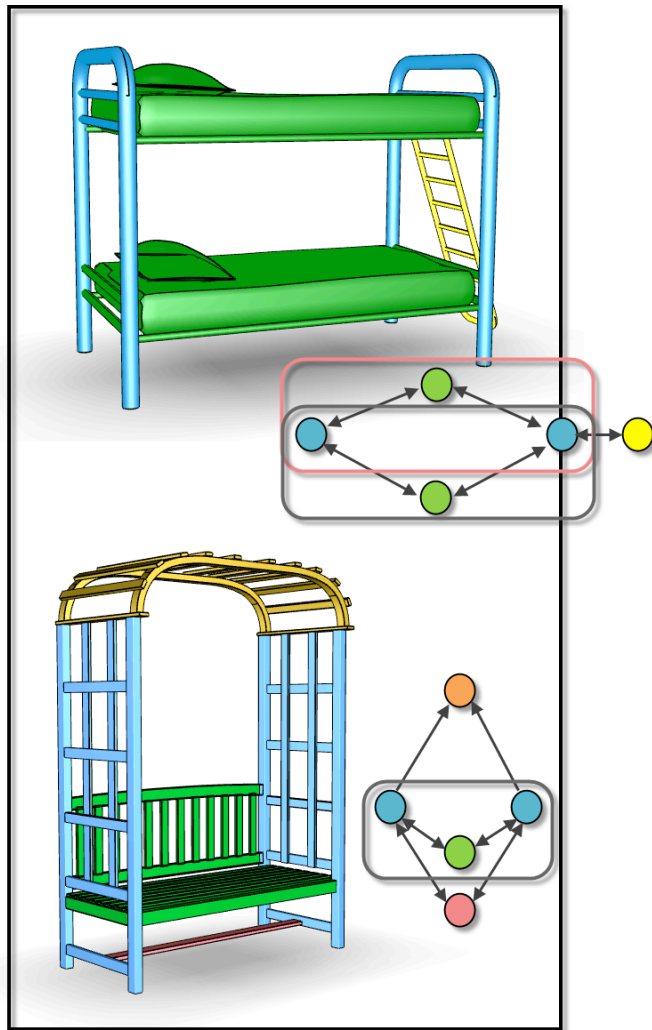
Placement Optimization



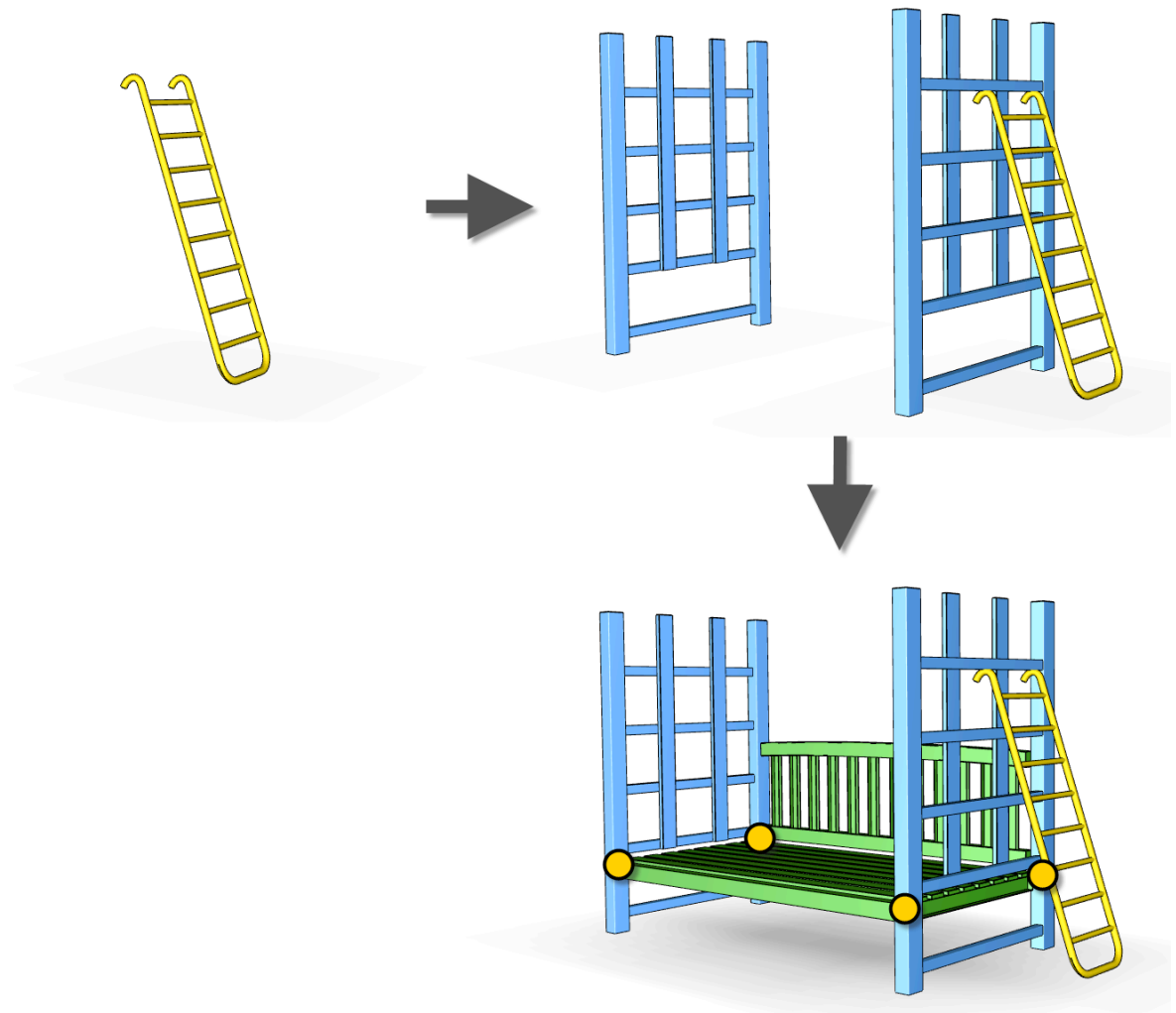
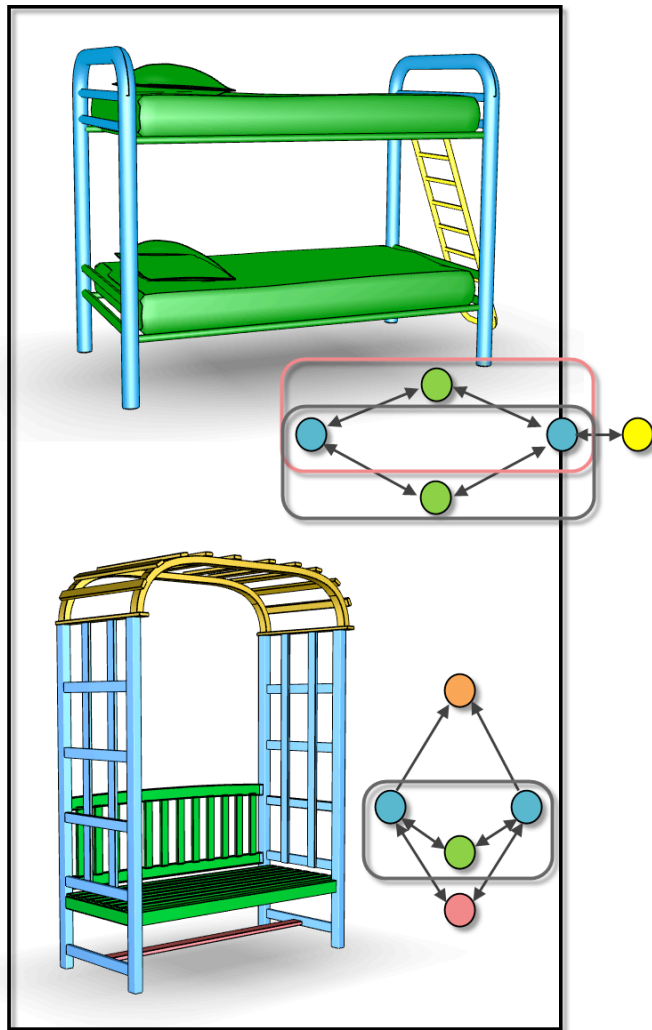
Placement Optimization



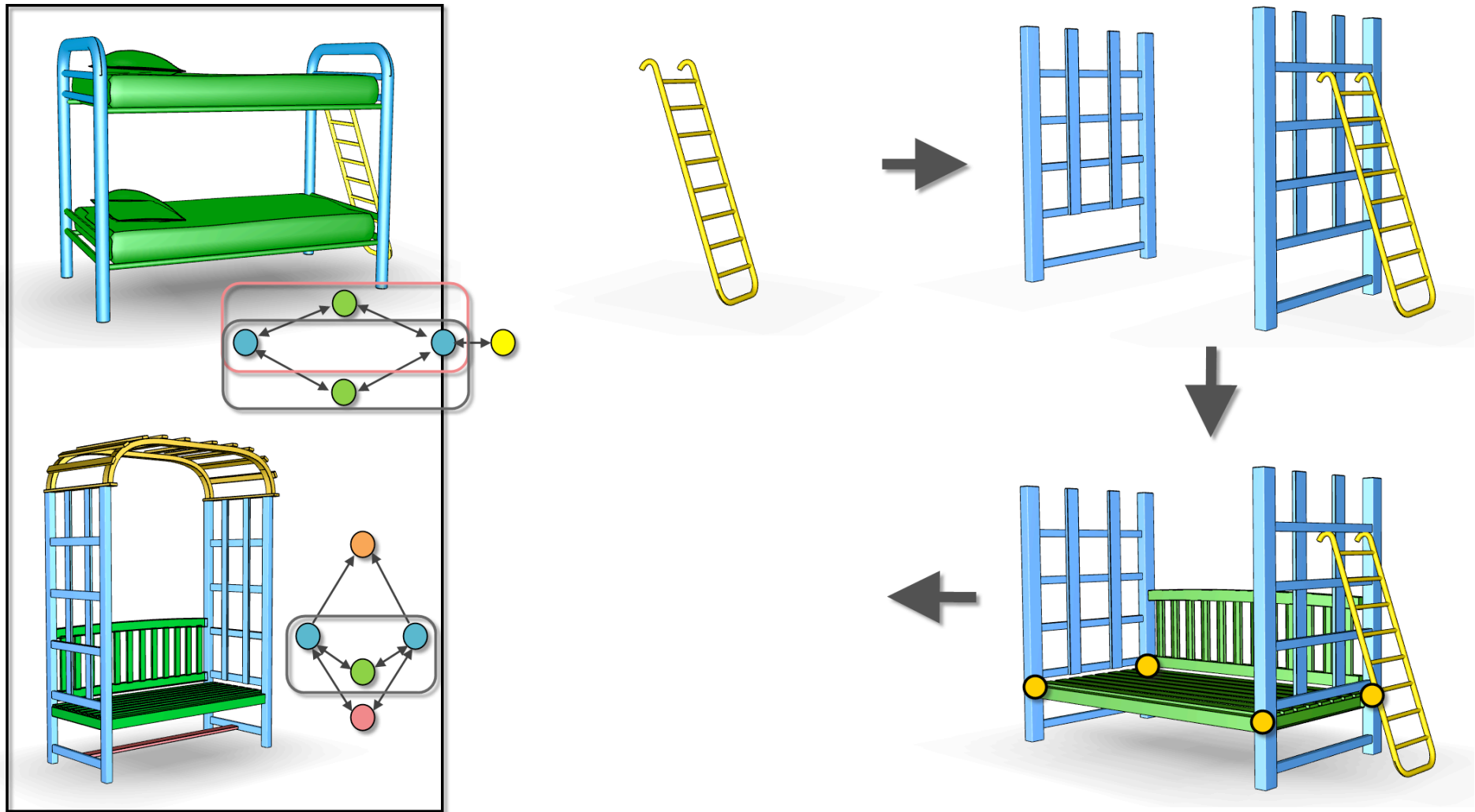
Placement Optimization



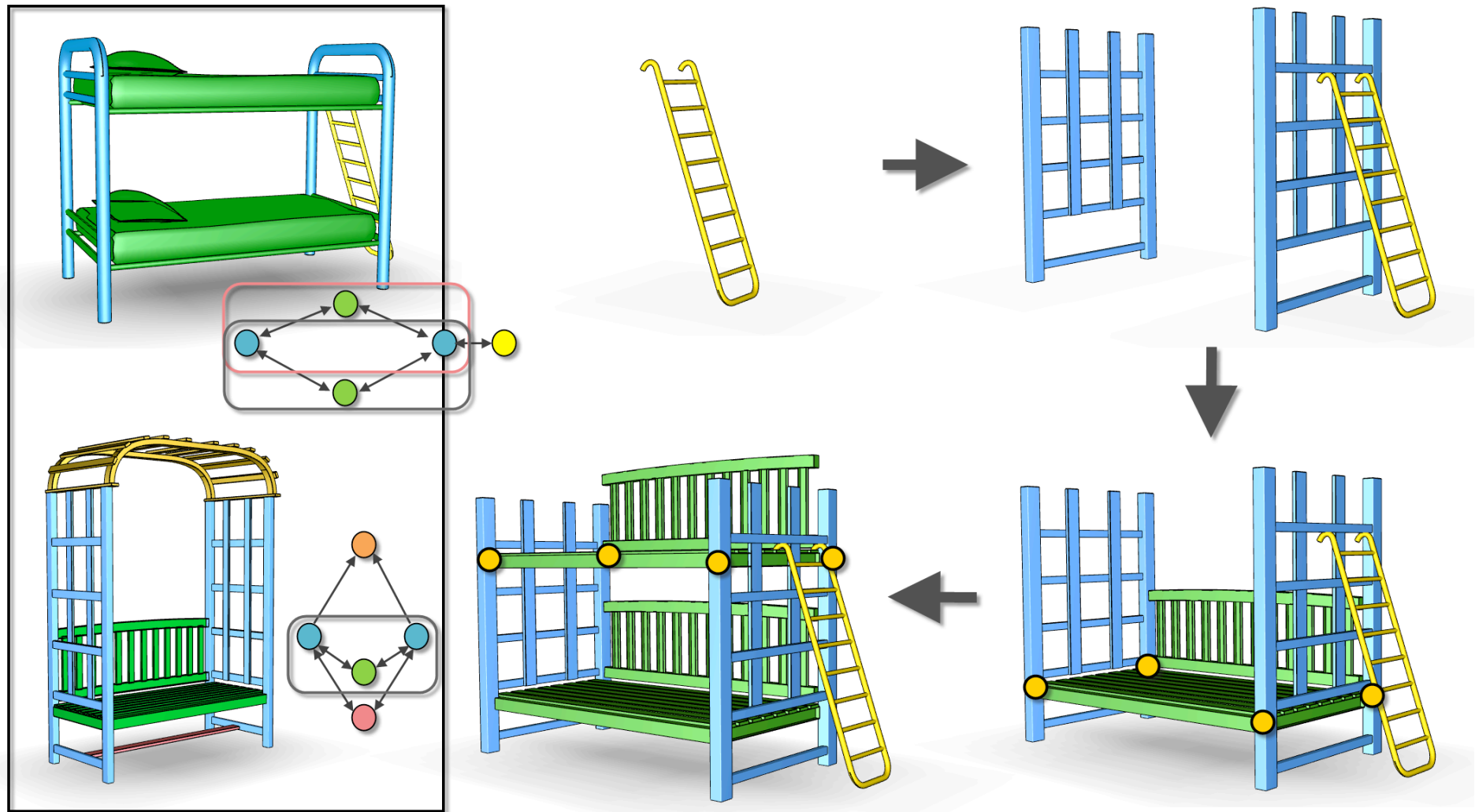
Placement Optimization



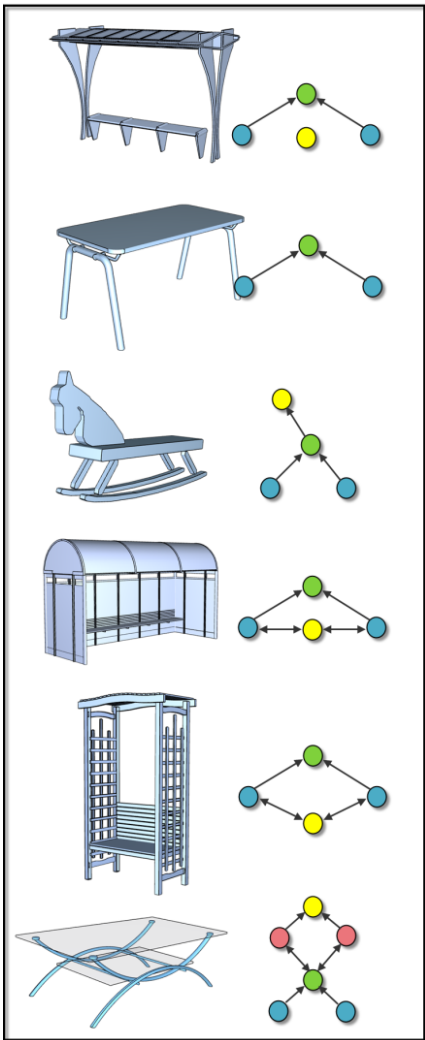
Placement Optimization



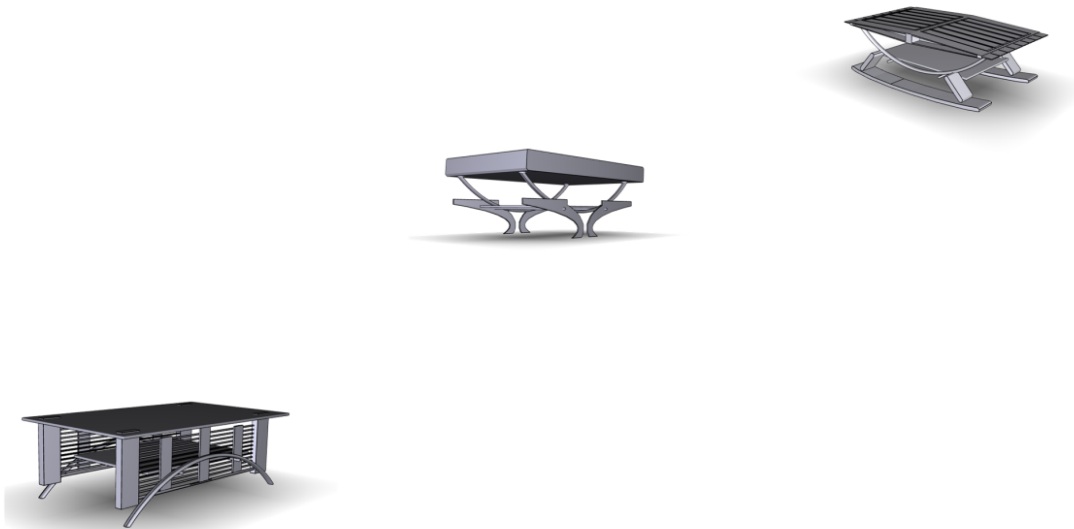
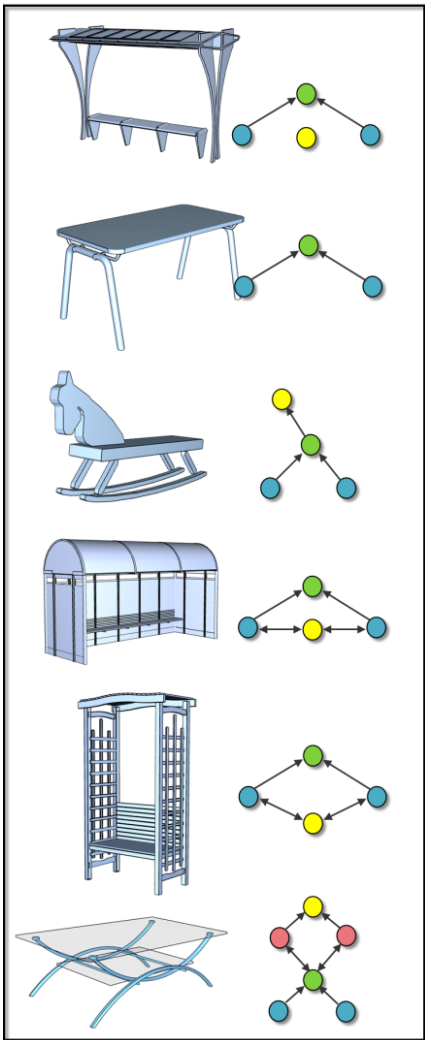
Placement Optimization



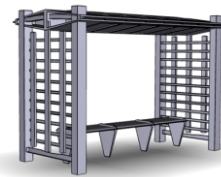
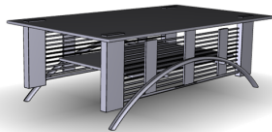
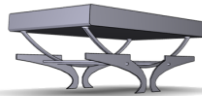
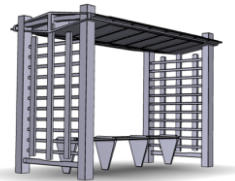
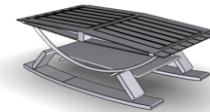
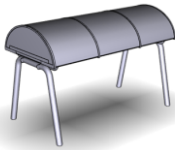
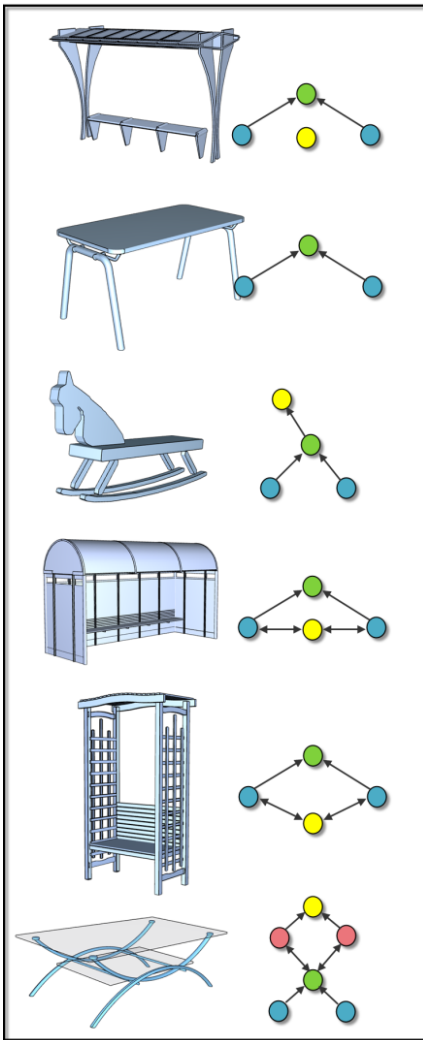
Results



Results

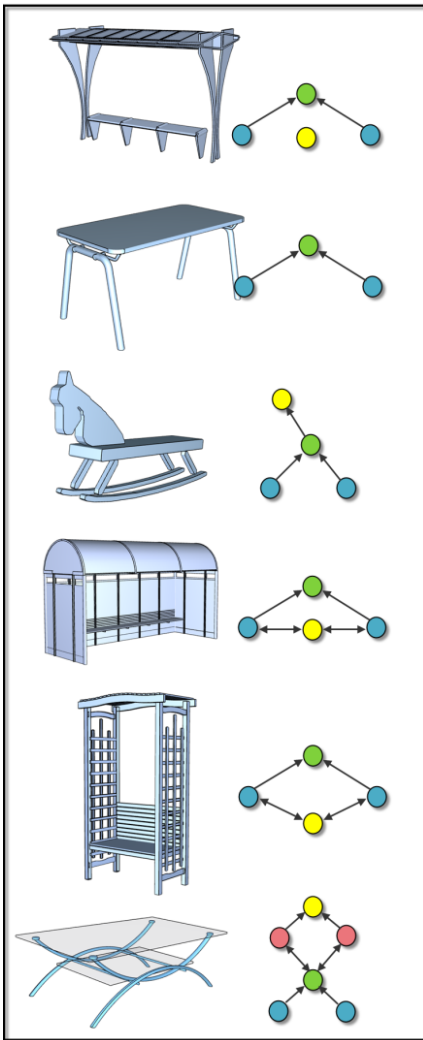


Results

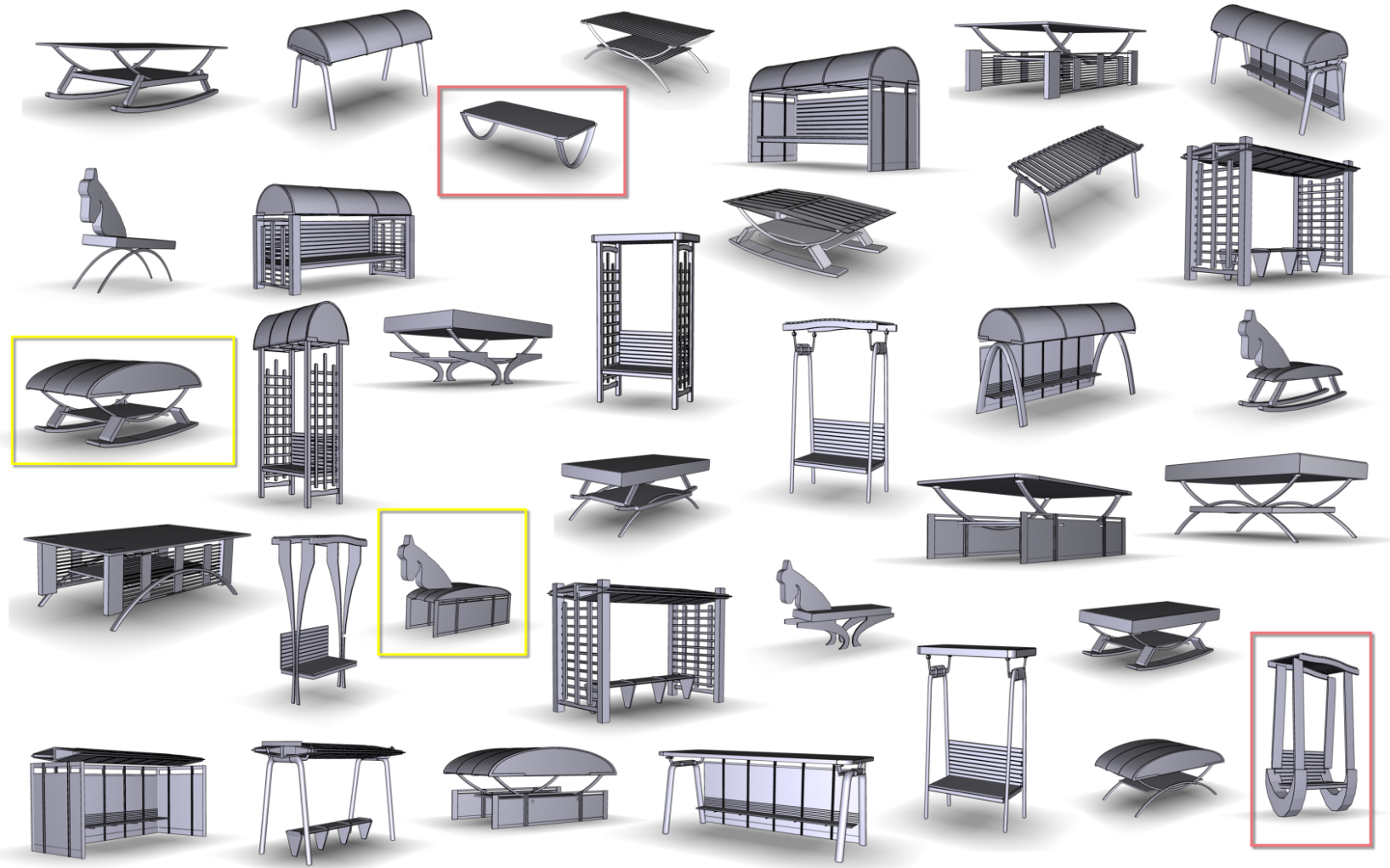
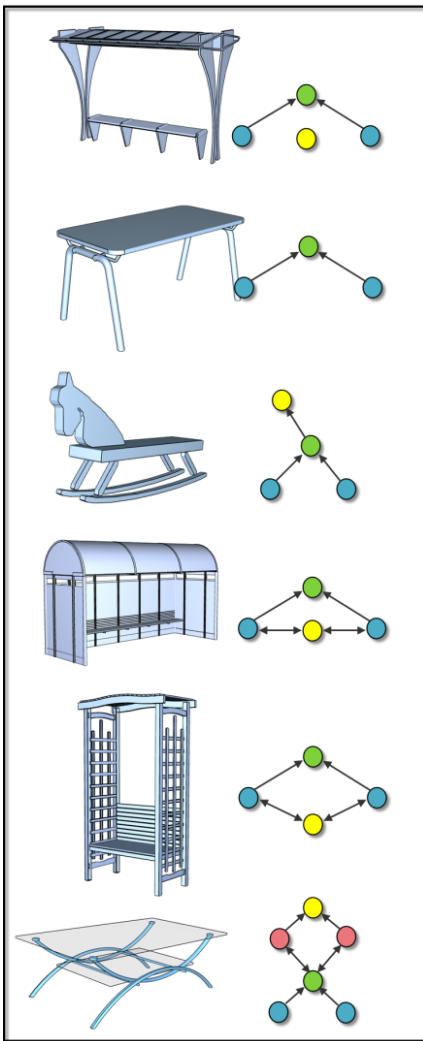


Demo

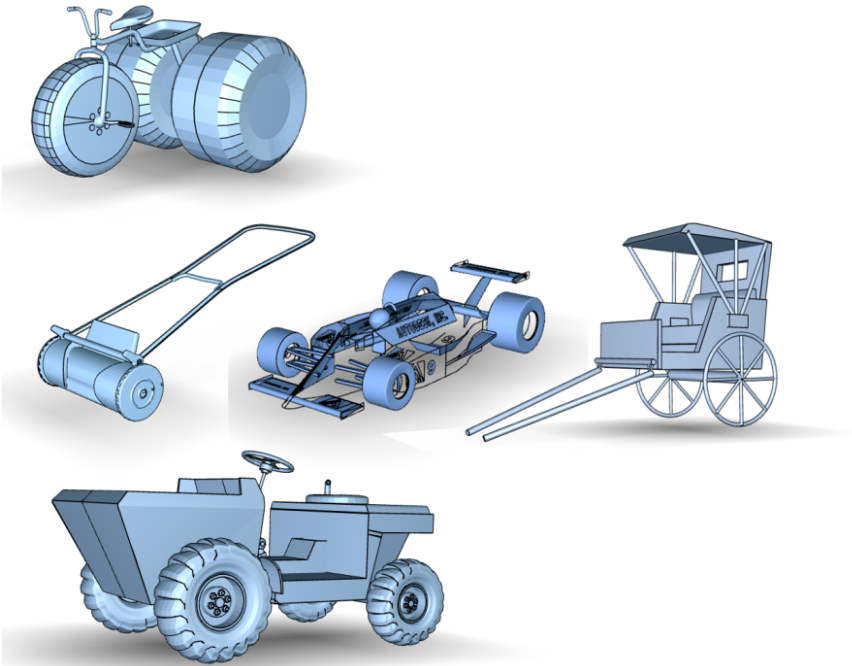
Results



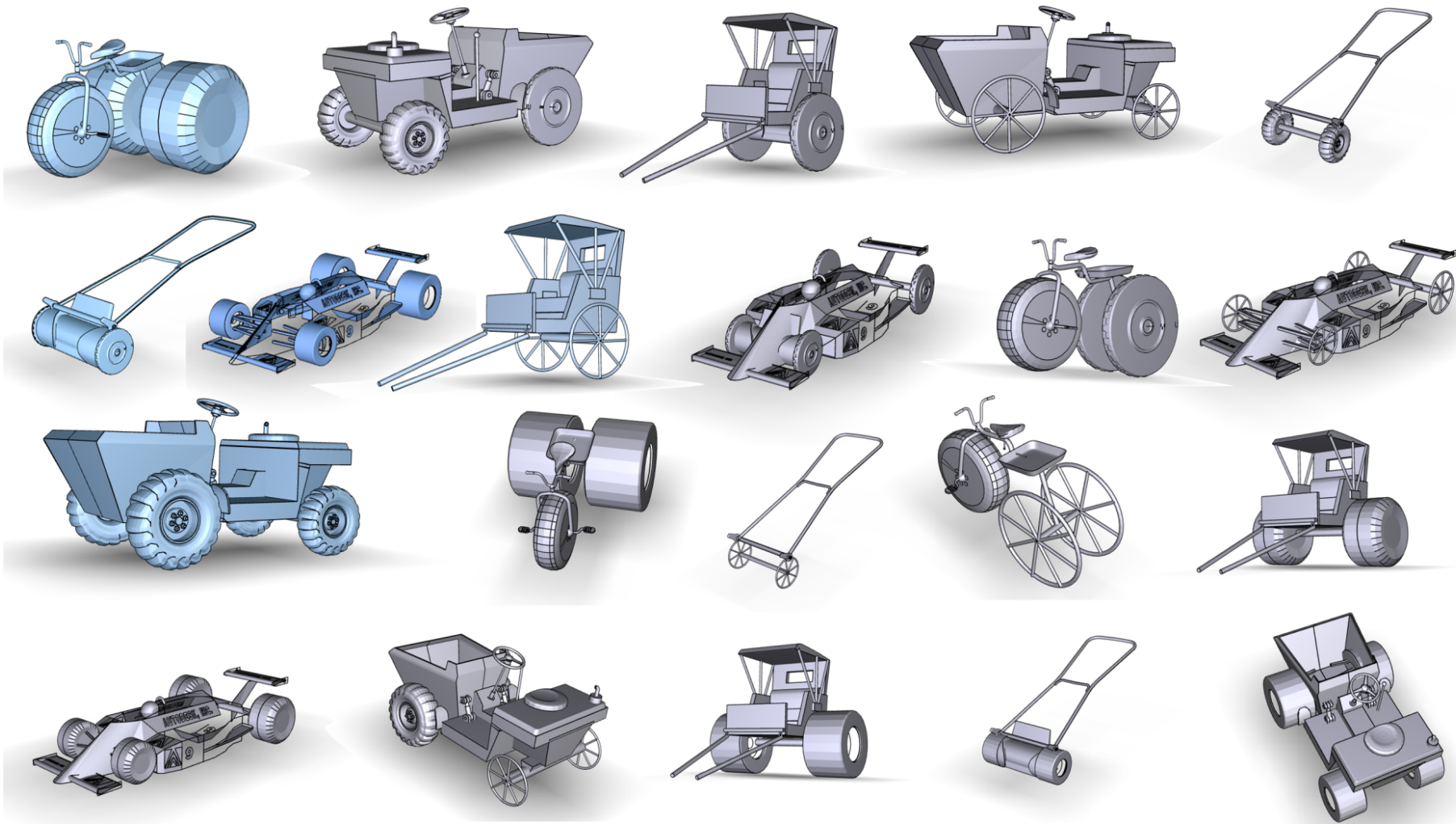
Results



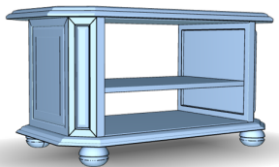
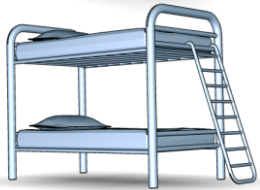
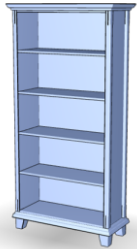
Results



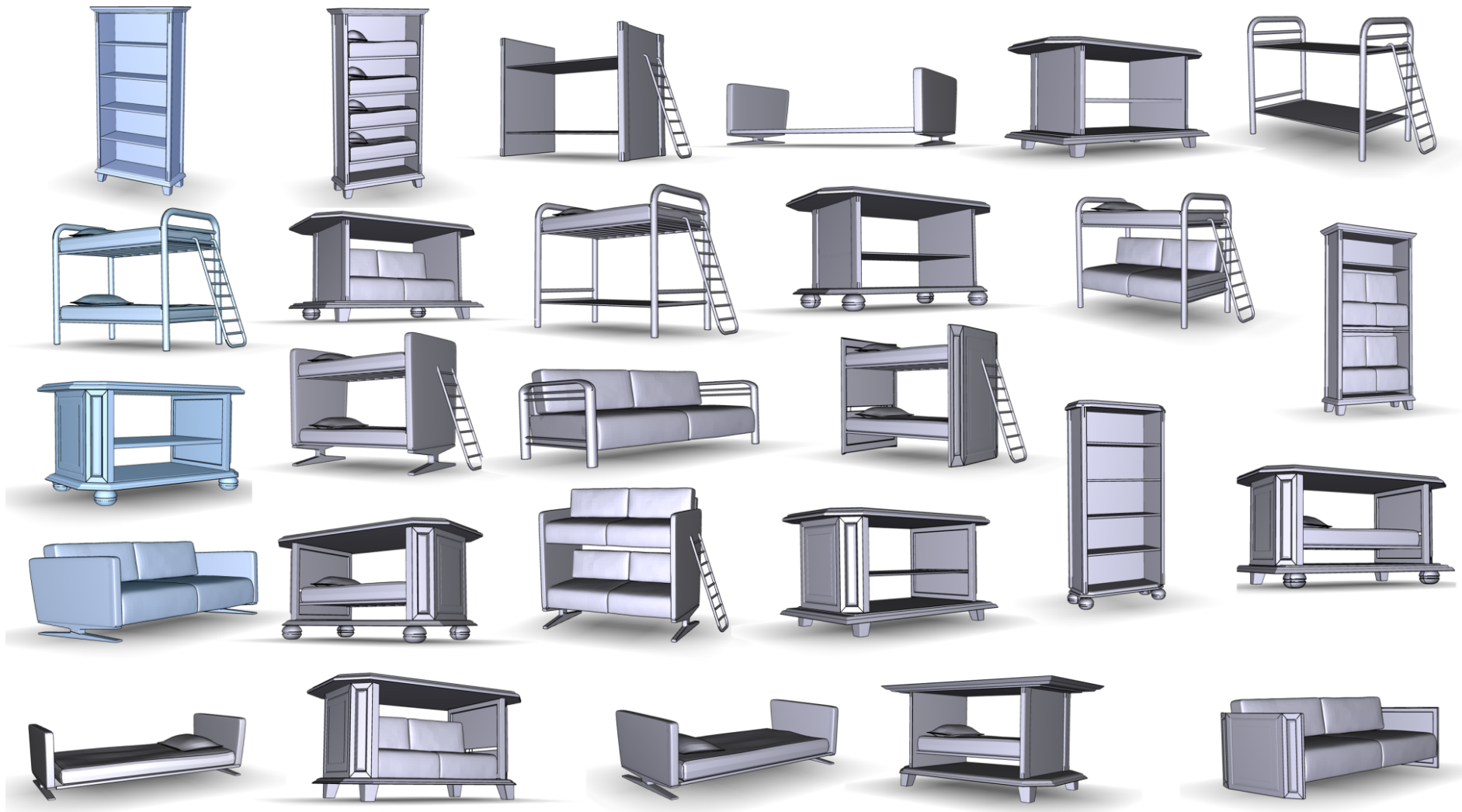
Results



Results



Results



Limitations

- Assume access to part-level segmented models

- Assume access to part-level segmented models
- 3 sFarr substructures are manually selected

- Assume access to part-level segmented models
- 3 sFarr substructures are manually selected
- user control?

- Assume access to part-level segmented models
- 3 sFarr substructures are manually selected
- user control?
- computational complexity

Summary and Future Work



- Using relation graphs for compositional modeling

- Using relation graphs for compositional modeling
- Stronger motivation to continue focusing on unsupervised analysis of model repositories

- Using relation graphs for compositional modeling
- Stronger motivation to continue focusing on unsupervised analysis of model repositories
- Relate it to actual physics simulation

- Using relation graphs for compositional modeling
- Stronger motivation to continue focusing on unsupervised analysis of model repositories
- Relate it to actual physics simulation

http://vecg.cs.ucl.ac.uk/Projects/SmartGeometry/sFarr/sFarr_eg13.html